

UBE2G2 Antibody

Catalog No: #43606

Orders: order@signalwayantibody.com

Support: tech@signalwayantibody.com

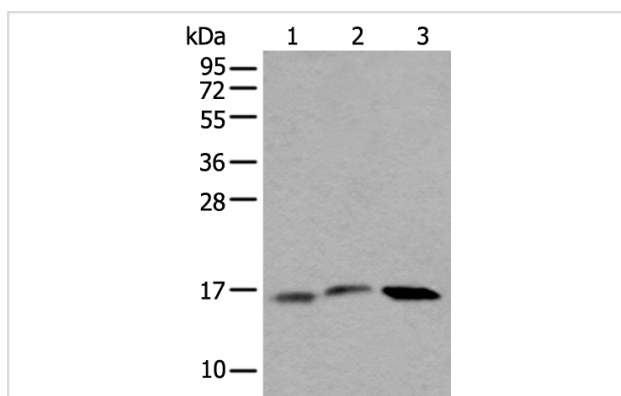
Description

Product Name	UBE2G2 Antibody
Host Species	Rabbit
Clonality	Polyclonal
Purification	Antigen affinity purification
Applications	WB
Species Reactivity	Hu Ms
Specificity	The antibody detects endogenous levels of total UBE2G2 protein.
Immunogen Type	protein
Immunogen Description	Full length fusion protein
Target Name	UBE2G2
Other Names	UBC7
Accession No.	Swiss-Prot#: P60604NCBI Gene ID: 7327
Uniprot	P60604
GeneID	7327;
Calculated MW	19kd
Concentration	0.7mg/ml
Formulation	Rabbit IgG in pH7.4 PBS, 0.05% NaN ₃ , 40% Glycerol.
Storage	Store at -20°C

Application Details

Western blotting: 1:200-1000

Images



Gel: 12%SDS-PAGE

Lysate: 40 µg, Lane 1-3: Jurkat cell lysate, Mouse testis tissue and 231 cell lysates,

Primary antibody: UBE2G2 antibody at dilution 1/250,

Secondary antibody: Goat anti rabbit IgG at 1/8000 dilution,

Exposure time: 2 minutes

Background

The modification of proteins with ubiquitin is an important cellular mechanism for targeting abnormal or short-lived proteins for degradation. Ubiquitination involves at least three classes of enzymes: ubiquitin-activating enzymes, or E1s, ubiquitin-conjugating enzymes, or E2s, and

ubiquitin-protein ligases, or E3s. This gene encodes a member of the E2 ubiquitin-conjugating enzyme family. The encoded protein shares 100% sequence identity with the mouse counterpart. This gene is ubiquitously expressed, with high expression seen in adult muscle. Three alternatively spliced transcript variants encoding distinct isoforms have been found for this gene.

Note: This product is for in vitro research use only