

UBE4A Antibody

Catalog No: #43609

Orders: order@signalwayantibody.comSupport: tech@signalwayantibody.com

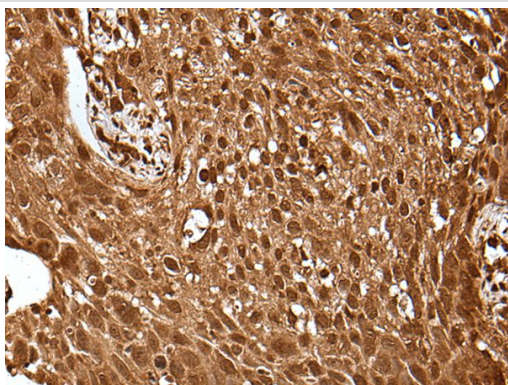
Description

Product Name	UBE4A Antibody
Host Species	Rabbit
Clonality	Polyclonal
Purification	Antigen affinity purification
Applications	IHC
Species Reactivity	Hu
Specificity	The antibody detects endogenous levels of total UBE4A protein.
Immunogen Type	protein
Immunogen Description	Fusion protein of human UBE4A
Target Name	UBE4A
Other Names	E4; UFD2; UBOX2
Accession No.	Swiss-Prot#: Q14139NCBI Gene ID: 9354
Uniprot	Q14139
GeneID	9354;
Concentration	0.7mg/ml
Formulation	Rabbit IgG in pH7.4 PBS, 0.05% NaN ₃ , 40% Glycerol.
Storage	Store at -20°C

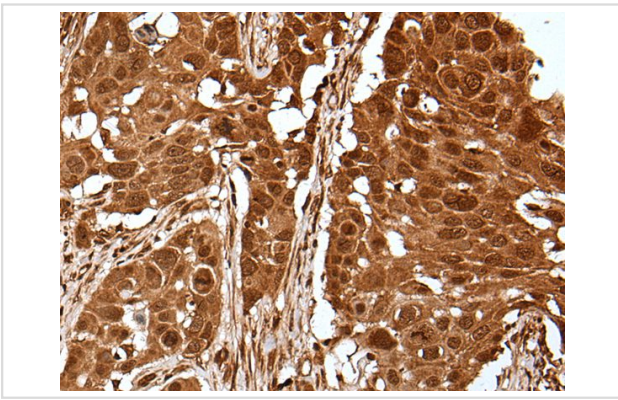
Application Details

Immunohistochemistry: 1: 20-100

Images



The image on the left is immunohistochemistry of paraffin-embedded Human lung cancer tissue using UBE4A Antibody at dilution 1/30, on the right is treated with fusion protein. (Original magnification: x200)



The image on the left is immunohistochemistry of paraffin-embedded Human esophagus cancer tissue using UBE4A Antibody at dilution 1/30, on the right is treated with fusion protein. (Original magnification: x200)

Background

This gene encodes a member of the U-box ubiquitin ligase family. The encoded protein is involved in multiubiquitin chain assembly and plays a critical role in chromosome condensation and separation through the polyubiquitination of securin. Autoantibodies against the encoded protein may be markers for scleroderma and Crohn's disease. A pseudogene of this gene is located on the long arm of chromosome 3. Alternatively spliced transcript variants encoding multiple isoforms have been observed for this gene.?

Note: This product is for in vitro research use only