

Mesothelin antibody

Catalog No: #22884

Orders: order@signalwayantibody.com

Support: tech@signalwayantibody.com

Description

Product Name	Mesothelin antibody
Host Species	Rabbit
Clonality	Polyclonal
Purification	Purified by antigen-affinity chromatography.
Applications	WB IHC
Species Reactivity	Hu
Immunogen Type	Recombinant protein
Immunogen Description	Recombinant protein fragment contain a sequence corresponding to a region within amino acids 44 and 438 of Human MSLN
Target Name	Mesothelin
Other Names	CAK1
Accession No.	Swiss-Prot:Q13421Gene ID:10232
Uniprot	Q13421
GeneID	10232;
Concentration	1mg/ml
Formulation	Supplied in 0.1M Tris-buffered saline with 10% Glycerol (pH7.0). 0.01% Thimerosal was added as a preservative.
Storage	Store at -20°C for long term preservation (recommended). Store at 4°C for short term use.

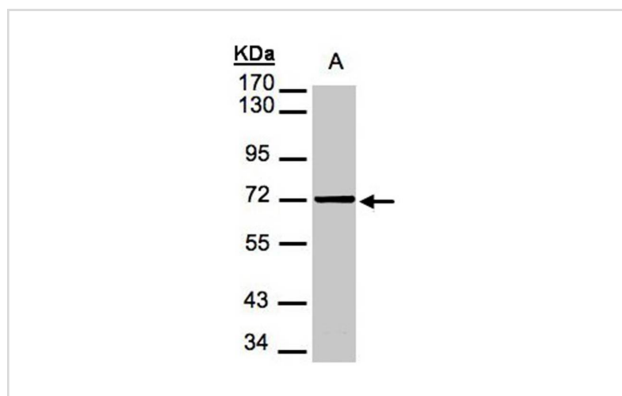
Application Details

Predicted MW: 69kd

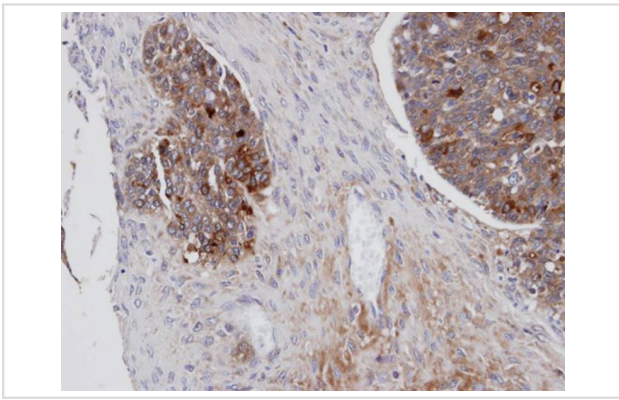
Western blotting: 1:500-1:3000

Immunohistochemistry: 1:100-1:250

Images



Sample(30 ug of whole cell lysate)
 A: 293T
 7.5% SDS PAGE
 Primary antibody diluted at 1: 1000



Immunohistochemical analysis of paraffin-embedded serous OVCA, using MSLN antibody at 1: 100 dilution.

Background

An antibody that reacts with ovarian cancers and mesotheliomas was used to isolate a cell surface antigen named mesothelin. Although the function of mesothelin is unknown, it may play a role in cellular adhesion and is present on mesothelium, mesotheliomas, and ovarian cancers. This gene encodes a preprotein that is cleaved into two products, megakaryocyte potentiating factor and mesothelin. Alternative splicing results in multiple transcript variants. [provided by RefSeq]

Note: This product is for in vitro research use only