

CLDN18 Antibody

Catalog No: #43625

Orders: order@signalwayantibody.comSupport: tech@signalwayantibody.com

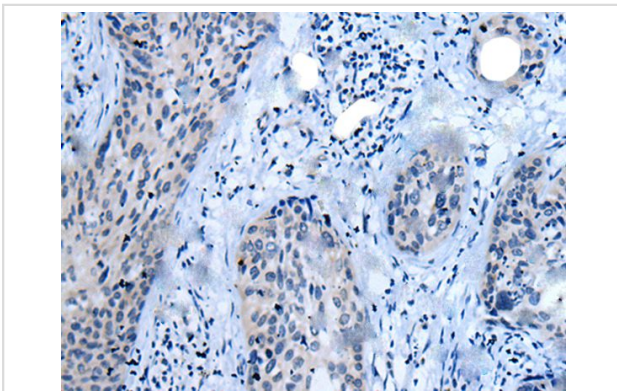
Description

Product Name	CLDN18 Antibody
Host Species	Rabbit
Clonality	Polyclonal
Purification	Antigen affinity purification
Applications	IHC
Species Reactivity	Hu
Specificity	The antibody detects endogenous levels of total CLDN18 protein.
Immunogen Type	peptide
Immunogen Description	Synthetic peptide of human CLDN18
Target Name	CLDN18
Other Names	SFTA5; SFTPJ
Accession No.	Swiss-Prot#: P56856NCBI Gene ID: 51208
Uniprot	P56856
GeneID	51208;
Concentration	0.5mg/ml
Formulation	Rabbit IgG in pH7.4 PBS, 0.05% NaN ₃ , 40% Glycerol.
Storage	Store at -20°C

Application Details

Immunohistochemistry: 1: 10-50

Images



The image on the left is immunohistochemistry of paraffin-embedded Human cervical cancer tissue using CLDN18 Antibody at dilution 1/25, on the right is treated with synthetic peptide. (Original magnification: x200)

Background

This gene encodes a member of the claudin family. Claudins are integral membrane proteins and components of tight junction strands. Tight junction strands serve as a physical barrier to prevent solutes and water from passing freely through the paracellular space between epithelial or endothelial cell sheets, and also play critical roles in maintaining cell polarity and signal transductions. This gene is upregulated in patients with ulcerative colitis and highly overexpressed in infiltrating ductal adenocarcinomas. PKC/MAPK/AP-1 (protein kinase C/mitogen-activated protein kinase/activator

protein-1) dependent pathway regulates the expression of this gene in gastric cells. Alternatively spliced transcript variants encoding different isoforms have been identified.

Note: This product is for in vitro research use only