

SPAG4 Antibody

Catalog No: #43626

Orders: order@signalwayantibody.comSupport: tech@signalwayantibody.com

Description

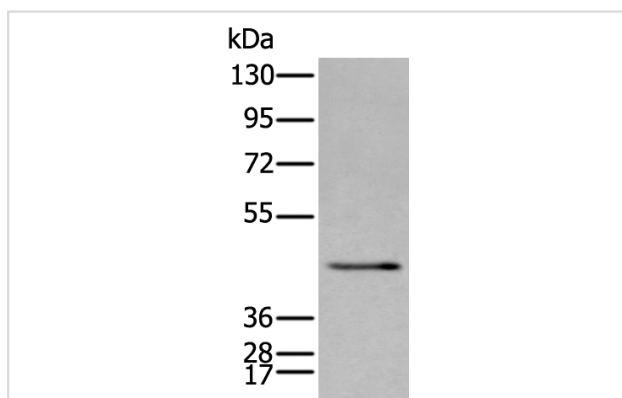
Product Name	SPAG4 Antibody
Host Species	Rabbit
Clonality	Polyclonal
Purification	Antigen affinity purification
Applications	IHC WB
Species Reactivity	Hu Ms
Specificity	The antibody detects endogenous levels of total SPAG4 protein.
Immunogen Type	peptide
Immunogen Description	Synthetic peptide of human SPAG4
Target Name	SPAG4
Other Names	SUN4; CT127
Accession No.	Swiss-Prot#: Q9NPE6NCBI Gene ID: 6676
Uniprot	Q9NPE6
GeneID	6676;
Calculated MW	48kd
Concentration	1.6mg/ml
Formulation	Rabbit IgG in pH7.4 PBS, 0.05% NaN ₃ , 40% Glycerol.
Storage	Store at -20°C

Application Details

Western blotting: 1:200-1000

Immunohistochemistry: 1: 100-300

Images



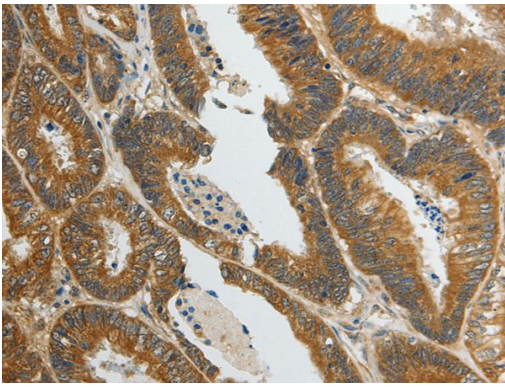
Gel: 8%SDS-PAGE

Lysate: 40 µg, Lane: NIH/3T3 cell lysate,

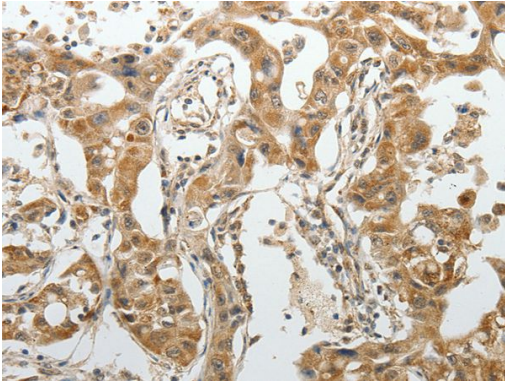
Primary antibody:SPAG4 antibody at dilution 1/400 dilution,

Secondary antibody: Goat anti rabbit IgG at 1/8000 dilution,

Exposure time: 5 minutes



The image on the left is immunohistochemistry of paraffin-embedded Human colon cancer tissue using SPAG4 Antibody at dilution 1/100, on the right is treated with synthetic peptide. (Original magnification: x200)



The image on the left is immunohistochemistry of paraffin-embedded Human lung cancer tissue using SPAG4 Antibody at dilution 1/100, on the right is treated with synthetic peptide. (Original magnification: x200)

Background

The mammalian sperm flagellum contains two cytoskeletal structures associated with the axoneme: the outer dense fibers surrounding the axoneme in the midpiece and principal piece and the fibrous sheath surrounding the outer dense fibers in the principal piece of the tail. Defects in these structures are associated with abnormal tail morphology, reduced sperm motility, and infertility. In the rat, the protein encoded by this gene associates with an outer dense fiber protein via a leucine zipper motif and localizes to the microtubules of the manchette and axoneme during sperm tail development.

Note: This product is for in vitro research use only