

## SYCP2 Antibody

Catalog No: #43633

Orders: [order@signalwayantibody.com](mailto:order@signalwayantibody.com)Support: [tech@signalwayantibody.com](mailto:tech@signalwayantibody.com)

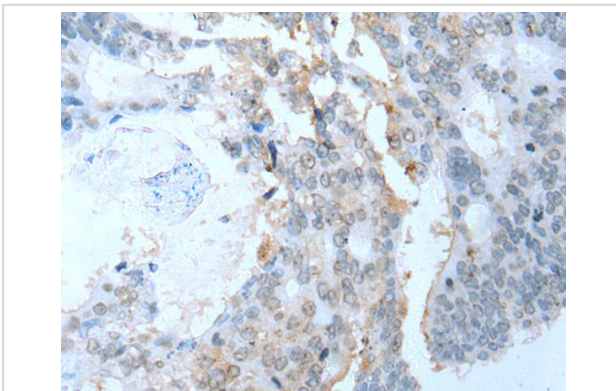
## Description

Product Name	SYCP2 Antibody
Host Species	Rabbit
Clonality	Polyclonal
Purification	Antigen affinity purification
Applications	IHC
Species Reactivity	Hu
Specificity	The antibody detects endogenous levels of total SYCP2 protein.
Immunogen Type	peptide
Immunogen Description	Synthetic peptide of human SYCP2
Target Name	SYCP2
Other Names	SCP2; SCP-2
Accession No.	Swiss-Prot#: Q9BX26NCBI Gene ID: 10388
Uniprot	Q9BX26
GeneID	10388;
Concentration	0.5mg/ml
Formulation	Rabbit IgG in pH7.4 PBS, 0.05% NaN <sub>3</sub> , 40% Glycerol.
Storage	Store at -20°C

## Application Details

Immunohistochemistry: 1: 10-50

## Images



The image on the left is immunohistochemistry of paraffin-embedded Human colorectal cancer tissue using SYCP2 Antibody at dilution 1/20, on the right is treated with synthetic peptide. (Original magnification: x200)

## Background

The synaptonemal complex is a proteinaceous structure that links homologous chromosomes during the prophase of meiosis. The protein encoded by this gene is a major component of the synaptonemal complex and may bind DNA at scaffold attachment regions. The encoded protein requires synaptonemal complex protein 3, but not 1, for inclusion in the synaptonemal complex.?

---

Note: This product is for in vitro research use only