

## SULF2 Antibody

Catalog No: #43638

Orders: [order@signalwayantibody.com](mailto:order@signalwayantibody.com)Support: [tech@signalwayantibody.com](mailto:tech@signalwayantibody.com)

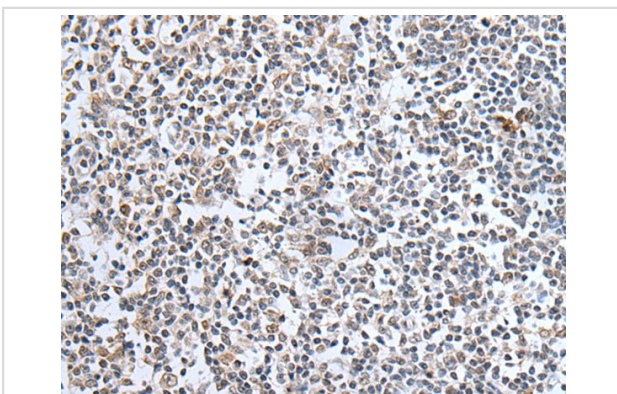
## Description

Product Name	SULF2 Antibody
Host Species	Rabbit
Clonality	Polyclonal
Purification	Antigen affinity purification
Applications	IHC
Species Reactivity	Hu Ms
Specificity	The antibody detects endogenous levels of total SULF2 protein.
Immunogen Type	peptide
Immunogen Description	Synthetic peptide of human SULF2
Target Name	SULF2
Other Names	HSULF-2
Accession No.	Swiss-Prot#: Q8IWU5NCBI Gene ID: 55959
Uniprot	Q8IWU5
GeneID	55959;
Concentration	0.4mg/ml
Formulation	Rabbit IgG in pH7.4 PBS, 0.05% NaN <sub>3</sub> , 40% Glycerol.
Storage	Store at -20°C

## Application Details

Immunohistochemistry: 1: 20-100

## Images



The image on the left is immunohistochemistry of paraffin-embedded Human tonsil tissue using SULF2 Antibody at dilution 1/25, on the right is treated with synthetic peptide. (Original magnification: x200)

## Background

Heparan sulfate proteoglycans (HSPGs) act as coreceptors for numerous heparin-binding growth factors and cytokines and are involved in cell signaling. Heparan sulfate 6-O-endosulfatases, such as SULF2, selectively remove 6-O-sulfate groups from heparan sulfate. This activity modulates the effects of heparan sulfate by altering binding sites for signaling molecules (Dai et al., 2005 [PubMed 16192265]).

---

Note: This product is for in vitro research use only