

## Endothelin 1 antibody

Catalog No: #22887

Orders: order@signalwayantibody.com

Support: tech@signalwayantibody.com

## Description

Product Name	Endothelin 1 antibody
Host Species	Rabbit
Clonality	Polyclonal
Purification	Purified by antigen-affinity chromatography.
Applications	WB IF
Species Reactivity	Hu
Immunogen Type	Peptide
Immunogen Description	Synthetic peptide contain a sequence corresponding to a region within amino acids 141 and 203 of Human EDN1
Target Name	Endothelin 1
Accession No.	Swiss-Prot:P05305Gene ID:1906
Uniprot	P05305
GeneID	1906;
Concentration	1mg/ml
Formulation	Supplied in 0.1M Tris-buffered saline with 20% Glycerol (pH7.0). 0.01% Thimerosal was added as a preservative.
Storage	Store at -20°C for long term preservation (recommended). Store at 4°C for short term use.

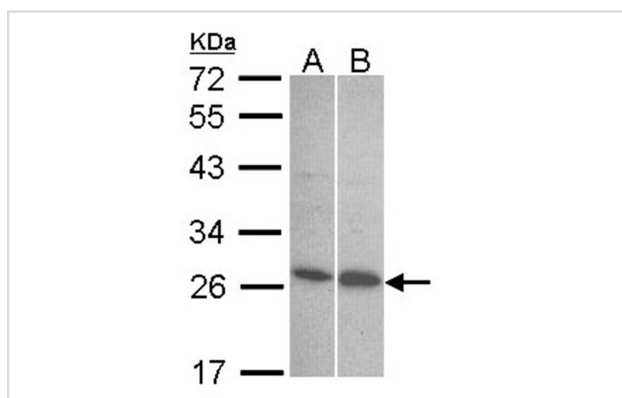
## Application Details

Predicted MW: 24kd

Western blotting: 1:500-1:3000

Immunofluorescence: 1:100-1:200

## Images



Sample (30 ug of whole cell lysate)

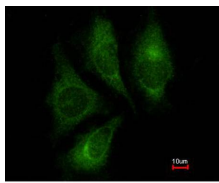
A: 293T

B: Hep G2

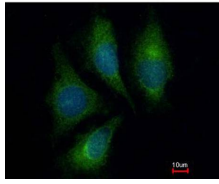
12% SDS PAGE

Primary antibody diluted at 1: 1000

Immunofluorescence analysis of methanol-fixed HeLa, using Endothelin 1 antibody at 1: 200 dilution.



Costained with Hoechst 33342



## Background

The protein encoded by this gene is proteolytically processed to release a secreted peptide termed endothelin 1. This peptide is a potent vasoconstrictor and is produced by vascular endothelial cells. Endothelin 1 also can affect the central nervous system. Two transcript variants encoding different isoforms have been found for this gene. [provided by RefSeq]

Note: This product is for in vitro research use only