

## TRIP11 Antibody

Catalog No: #43642

Orders: [order@signalwayantibody.com](mailto:order@signalwayantibody.com)Support: [tech@signalwayantibody.com](mailto:tech@signalwayantibody.com)

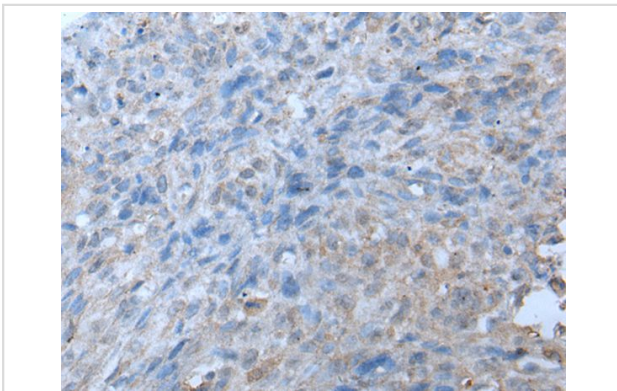
## Description

Product Name	TRIP11 Antibody
Host Species	Rabbit
Clonality	Polyclonal
Purification	Antigen affinity purification
Applications	IHC
Species Reactivity	Hu
Specificity	The antibody detects endogenous levels of total TRIP11 protein.
Immunogen Type	peptide
Immunogen Description	Synthetic peptide of human TRIP11
Target Name	TRIP11
Other Names	ACG1A; CEV14; GMAP210; TRIP-11; TRIP230; GMAP-210
Accession No.	Swiss-Prot#: Q15643NCBI Gene ID: 9321
Uniprot	Q15643
GeneID	9321;
Concentration	0.5mg/ml
Formulation	Rabbit IgG in pH7.4 PBS, 0.05% NaN <sub>3</sub> , 40% Glycerol.
Storage	Store at -20°C

## Application Details

Immunohistochemistry: 1: 10-50

## Images



The image on the left is immunohistochemistry of paraffin-embedded Human lung cancer tissue using TRIP11 Antibody at dilution 1/20, on the right is treated with synthetic peptide. (Original magnification: x200)

## Background

This gene was identified based on the interaction of its protein product with thyroid hormone receptor beta. This protein is associated with the Golgi apparatus. The N-terminal region of the protein binds Golgi membranes and the C-terminal region binds the minus ends of microtubules; thus, the protein is thought to play a role in assembly and maintenance of the Golgi ribbon structure around the centrosome. Mutations in this gene cause achondrogenesis type IA.

---

Note: This product is for in vitro research use only