

## MLXIPL Antibody

Catalog No: #43648

Orders: [order@signalwayantibody.com](mailto:order@signalwayantibody.com)Support: [tech@signalwayantibody.com](mailto:tech@signalwayantibody.com)

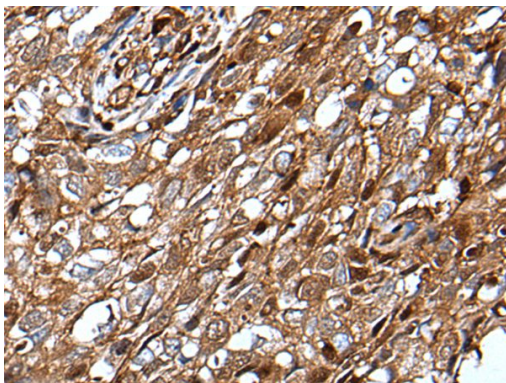
## Description

Product Name	MLXIPL Antibody
Host Species	Rabbit
Clonality	Polyclonal
Purification	Antigen affinity purification
Applications	IHC
Species Reactivity	Hu
Specificity	The antibody detects endogenous levels of total MLXIPL protein.
Immunogen Type	peptide
Immunogen Description	Synthetic peptide of human MLXIPL
Target Name	MLXIPL
Other Names	MIO; CHREBP; MONDOB; WBSCR14; WS-bHLH; bHLHd14
Accession No.	Swiss-Prot#: Q9NP71NCBI Gene ID: 51085
Uniprot	Q9NP71
GeneID	51085;
Concentration	0.8mg/ml
Formulation	Rabbit IgG in pH7.4 PBS, 0.05% NaN <sub>3</sub> , 40% Glycerol.
Storage	Store at -20°C

## Application Details

Immunohistochemistry: 1: 20-100

## Images



The image on the left is immunohistochemistry of paraffin-embedded Human lung cancer tissue using MLXIPL Antibody at dilution 1/30, on the right is treated with synthetic peptide. (Original magnification: x200)

## Background

This gene encodes a basic helix-loop-helix leucine zipper transcription factor of the Myc/Max/Mad superfamily. This protein forms a heterodimeric complex and binds and activates, in a glucose-dependent manner, carbohydrate response element (ChoRE) motifs in the promoters of triglyceride synthesis genes. The gene is deleted in Williams-Beuren syndrome, a multisystem developmental disorder caused by the deletion of contiguous genes at chromosome 7q11.23. Alternative splicing results in multiple transcript variants.?

---

Note: This product is for in vitro research use only