

CLDN12 Antibody

Catalog No: #43652

Orders: order@signalwayantibody.comSupport: tech@signalwayantibody.com

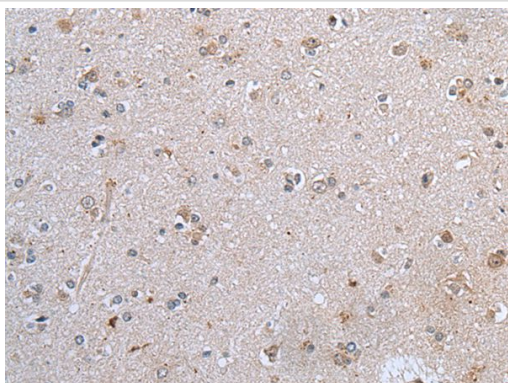
Description

Product Name	CLDN12 Antibody
Host Species	Rabbit
Clonality	Polyclonal
Purification	Antigen affinity purification
Applications	IHC
Species Reactivity	Hu
Specificity	The antibody detects endogenous levels of total CLDN12 protein.
Immunogen Type	peptide
Immunogen Description	Synthetic peptide of human CLDN12
Target Name	CLDN12
Accession No.	Swiss-Prot#: P56749NCBI Gene ID: 9069
Uniprot	P56749
GeneID	9069;
Concentration	1.1mg/ml
Formulation	Rabbit IgG in pH7.4 PBS, 0.05% NaN ₃ , 40% Glycerol.
Storage	Store at -20°C

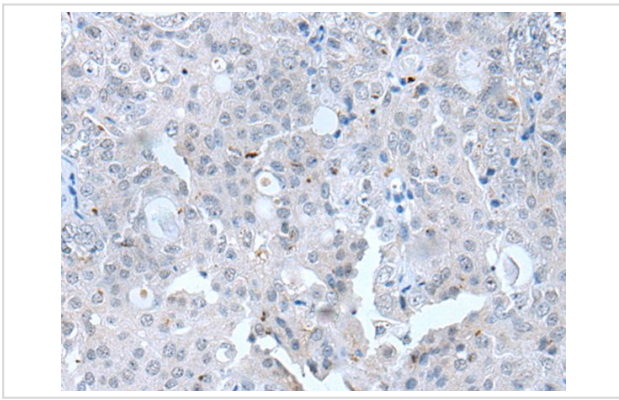
Application Details

Immunohistochemistry: 1: 30-150

Images



The image on the left is immunohistochemistry of paraffin-embedded Human brain tissue using CLDN12 Antibody at dilution 1/45, on the right is treated with synthetic peptide. (Original magnification: x200)



The image on the left is immunohistochemistry of paraffin-embedded Human ovarian cancer tissue using CLDN12 Antibody at dilution 1/45, on the right is treated with synthetic peptide. (Original magnification: x200)

Background

This gene encodes a member of the claudin family. Claudins are integral membrane proteins and components of tight junction strands. Tight junction strands serve as a physical barrier to prevent solutes and water from passing freely through the paracellular space between epithelial or endothelial cell sheets, and also play critical roles in maintaining cell polarity and signal transductions. This gene is expressed in the inner ear and bladder epithelium, and it is over-expressed in colorectal carcinomas. This protein and claudin 2 are critical for vitamin D-dependent Ca^{2+} absorption between enterocytes. Multiple alternatively spliced transcript variants encoding the same protein have been found.

Note: This product is for in vitro research use only