

DDC Antibody

Catalog No: #43658

Orders: order@signalwayantibody.com

Support: tech@signalwayantibody.com

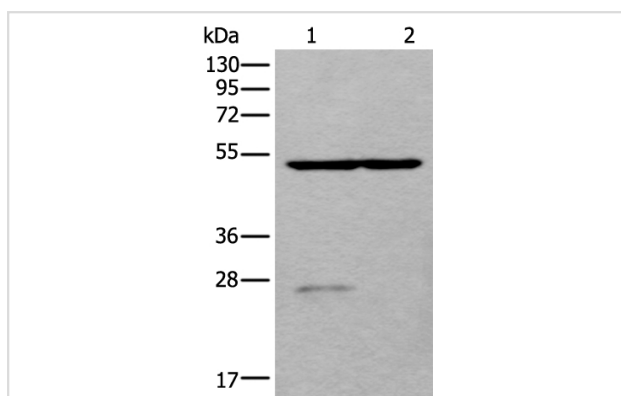
Description

Product Name	DDC Antibody
Host Species	Rabbit
Clonality	Polyclonal
Purification	Antigen affinity purification
Applications	WB
Species Reactivity	Hu
Specificity	The antibody detects endogenous levels of total DDC protein.
Immunogen Type	peptide
Immunogen Description	Synthetic peptide of human DDC
Target Name	DDC
Other Names	AADC
Accession No.	Swiss-Prot#: P20711NCBI Gene ID: 1644
Uniprot	P20711
GeneID	1644;
Calculated MW	54kd
Concentration	0.7mg/ml
Formulation	Rabbit IgG in pH7.4 PBS, 0.05% NaN ₃ , 40% Glycerol.
Storage	Store at -20°C

Application Details

Western blotting: 1:500-2000

Images



Gel: 8%SDS-PAGE

Lysate: 40 µg, Lane 1-2: Human left kidney tissue and Human fetal liver tissue lysates,

Primary antibody:DDC antibody at dilution 1/800,

Secondary antibody: Goat anti rabbit IgG at 1/8000 dilution,

Exposure time: 10 seconds

Background

The encoded protein catalyzes the decarboxylation of L-3,4-dihydroxyphenylalanine (DOPA) to dopamine, L-5-hydroxytryptophan to serotonin and L-tryptophan to tryptamine. Defects in this gene are the cause of aromatic L-amino-acid decarboxylase deficiency (AADCD). AADCD deficiency is an

inborn error in neurotransmitter metabolism that leads to combined serotonin and catecholamine deficiency. Multiple alternatively spliced transcript variants encoding different isoforms have been identified for this gene.

Note: This product is for in vitro research use only