

## KMT2B Antibody

Catalog No: #43660

Orders: [order@signalwayantibody.com](mailto:order@signalwayantibody.com)Support: [tech@signalwayantibody.com](mailto:tech@signalwayantibody.com)

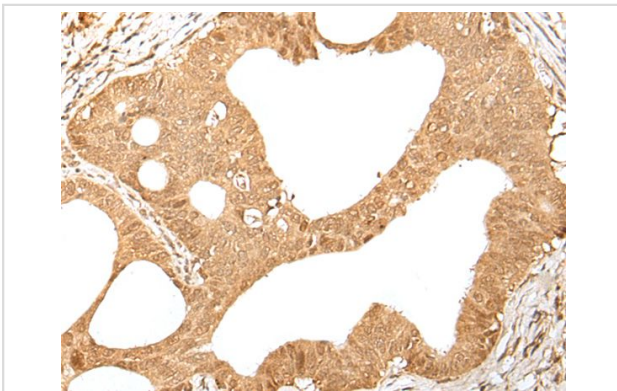
## Description

Product Name	KMT2B Antibody
Host Species	Rabbit
Clonality	Polyclonal
Purification	Antigen affinity purification
Applications	IHC
Species Reactivity	Hu Ms
Specificity	The antibody detects endogenous levels of total KMT2B protein.
Immunogen Type	peptide
Immunogen Description	Synthetic peptide of human KMT2B
Target Name	KMT2B
Other Names	HRX2; MLL2; MLL4; TRX2; WBP7; MLL1B; WBP-7; CXXC10
Accession No.	Swiss-Prot#: Q9UMN6NCBI Gene ID: 9757
Uniprot	Q9UMN6
GeneID	9757;
Concentration	1.4mg/ml
Formulation	Rabbit IgG in pH7.4 PBS, 0.05% NaN <sub>3</sub> , 40% Glycerol.
Storage	Store at -20°C

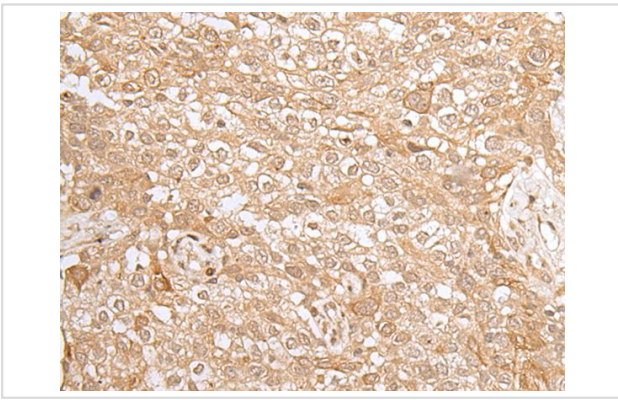
## Application Details

Immunohistochemistry: 1: 20-100

## Images



The image on the left is immunohistochemistry of paraffin-embedded Human gastric cancer tissue using KMT2B Antibody at dilution 1/35, on the right is treated with synthetic peptide. (Original magnification: x200)



The image on the left is immunohistochemistry of paraffin-embedded Human lung cancer tissue using KMT2B Antibody at dilution 1/35, on the right is treated with synthetic peptide. (Original magnification: x200)

## Background

This gene encodes a protein which contains multiple domains including a CXXC zinc finger, three PHD zinc fingers, two FY-rich domains, and a SET (suppressor of variegation, enhancer of zeste, and trithorax) domain. The SET domain is a conserved C-terminal domain that characterizes proteins of the MLL (mixed-lineage leukemia) family. This gene is ubiquitously expressed in adult tissues. It is also amplified in solid tumor cell lines, and may be involved in human cancer. Two alternatively spliced transcript variants encoding distinct isoforms have been reported for this gene, however, the full length nature of the shorter transcript is not known.?

Note: This product is for in vitro research use only