

NTN1 Antibody

Catalog No: #43661

Orders: order@signalwayantibody.comSupport: tech@signalwayantibody.com

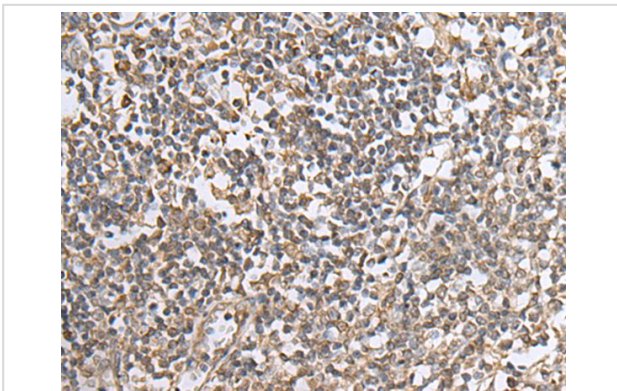
Description

Product Name	NTN1 Antibody
Host Species	Rabbit
Clonality	Polyclonal
Purification	Antigen affinity purification
Applications	IHC
Species Reactivity	Hu Ms Rt
Specificity	The antibody detects endogenous levels of total NTN1 protein.
Immunogen Type	peptide
Immunogen Description	Synthetic peptide of human NTN1
Target Name	NTN1
Other Names	NTN1L
Accession No.	Swiss-Prot#: O95631NCBI Gene ID: 9423
Uniprot	O95631
GeneID	9423;
Concentration	0.5mg/ml
Formulation	Rabbit IgG in pH7.4 PBS, 0.05% NaN ₃ , 40% Glycerol.
Storage	Store at -20°C

Application Details

Immunohistochemistry: 1: 20-100

Images



The image on the left is immunohistochemistry of paraffin-embedded Human tonsil tissue using NTN1 Antibody at dilution 1/20, on the right is treated with synthetic peptide. (Original magnification: x200)

Background

Netrin is included in a family of laminin-related secreted proteins. The function of this gene has not yet been defined; however, netrin is thought to be involved in axon guidance and cell migration during development. Mutations and loss of expression of netrin suggest that variation in netrin may be involved in cancer development.

Note: This product is for in vitro research use only