

SMARCA1 Antibody

Catalog No: #43663

Orders: order@signalwayantibody.comSupport: tech@signalwayantibody.com

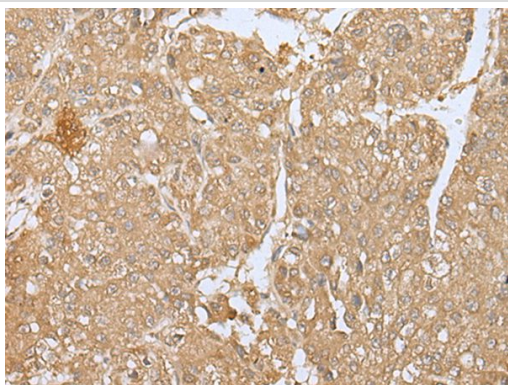
Description

Product Name	SMARCA1 Antibody
Host Species	Rabbit
Clonality	Polyclonal
Purification	Antigen affinity purification
Applications	IHC
Species Reactivity	Hu
Specificity	The antibody detects endogenous levels of total SMARCA1 protein.
Immunogen Type	peptide
Immunogen Description	Synthetic peptide of human SMARCA1
Target Name	SMARCA1
Other Names	SWI; ISWI; SWI2; SNF2L; SNF2L1; SNF2LB; SNF2LT; NURF140
Accession No.	Swiss-Prot#: P28370NCBI Gene ID: 6594
Uniprot	P28370
GeneID	6594;
Concentration	1mg/ml
Formulation	Rabbit IgG in pH7.4 PBS, 0.05% NaN ₃ , 40% Glycerol.
Storage	Store at -20°C

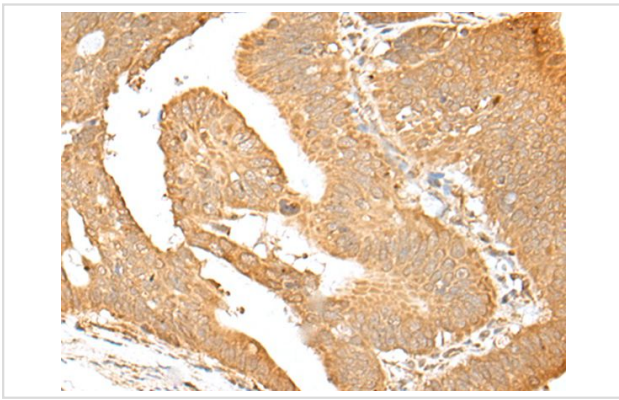
Application Details

Immunohistochemistry: 1: 20-100

Images



The image on the left is immunohistochemistry of paraffin-embedded Human liver cancer tissue using SMARCA1 Antibody at dilution 1/25, on the right is treated with synthetic peptide. (Original magnification: x200)



The image on the left is immunohistochemistry of paraffin-embedded Human gastric cancer tissue using SMARCA1 Antibody at dilution 1/25, on the right is treated with synthetic peptide. (Original magnification: x200)

Background

This gene encodes a member of the SWI/SNF family of proteins. The encoded protein is an ATPase which is expressed in diverse tissues and contributes to the chromatin remodeling complex that is involved in transcription. The protein may also play a role in DNA damage, growth inhibition and apoptosis of cancer cells. Alternative splicing results in multiple transcript variants.

Note: This product is for in vitro research use only