

## CXCL1 Antibody

Catalog No: #43679

Orders: [order@signalwayantibody.com](mailto:order@signalwayantibody.com)Support: [tech@signalwayantibody.com](mailto:tech@signalwayantibody.com)

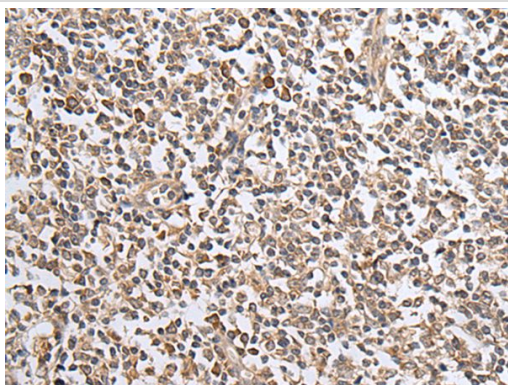
## Description

Product Name	CXCL1 Antibody
Host Species	Rabbit
Clonality	Polyclonal
Purification	Antigen affinity purification
Applications	IHC
Species Reactivity	Hu
Specificity	The antibody detects endogenous levels of total CXCL1 protein.
Immunogen Type	peptide
Immunogen Description	Synthetic peptide of human CXCL1
Target Name	CXCL1
Other Names	FSP; GRO1; GROa; MGSA; NAP-3; SCYB1; MGSA-a
Accession No.	Swiss-Prot#: P09341NCBI Gene ID: 2919
Uniprot	P09341
GeneID	2919;
Concentration	0.8mg/ml
Formulation	Rabbit IgG in pH7.4 PBS, 0.05% NaN <sub>3</sub> , 40% Glycerol.
Storage	Store at -20°C

## Application Details

Immunohistochemistry: 1: 20-100

## Images



The image on the left is immunohistochemistry of paraffin-embedded Human tonsil tissue using CXCL1 Antibody at dilution 1/20, on the right is treated with synthetic peptide. (Original magnification: x200)

## Background

This antimicrobial gene encodes a member of the CXC subfamily of chemokines. The encoded protein is a secreted growth factor that signals through the G-protein coupled receptor, CXC receptor 2. This protein plays a role in inflammation and as a chemoattractant for neutrophils. Aberrant expression of this protein is associated with the growth and progression of certain tumors. A naturally occurring processed form of this protein has increased chemotactic activity. Alternate splicing results in coding and non-coding variants of this gene. A pseudogene of this gene is found on

chromosome 4.

---

Note: This product is for in vitro research use only