

Description

Product Name	APE1 antibody
Host Species	Rabbit
Clonality	Polyclonal
Purification	Affinity purified by Protein A.
Applications	WB IF
Species Reactivity	Hu
Immunogen Type	Peptide
Immunogen Description	Synthetic peptide contain a sequence corresponding to a region within amino acids 1 and 15 of APE1
Target Name	APE1
Other Names	APE; APE-1; APE1; APEN; APEX; APX; HAP1; REF-1; REF1
Accession No.	Swiss-Prot:P27695Gene ID:328
Uniprot	P27695
GeneID	328;
Concentration	5mg/ml
Formulation	Supplied in 0.1M Tris-buffered saline with 10% Glycerol (pH7.0). 0.01% Thimerosal was added as a preservative.
Storage	Store at -20°C for long term preservation (recommended). Store at 4°C for short term use.

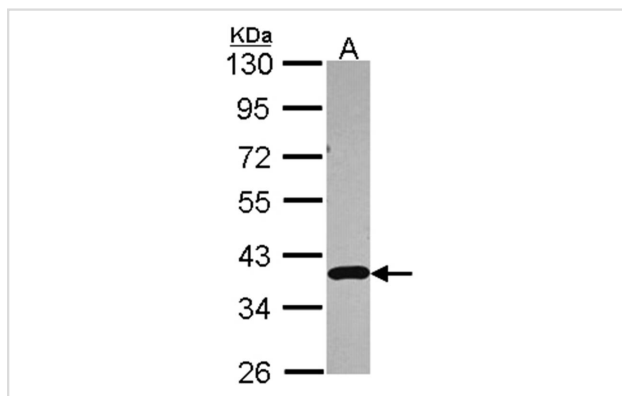
Application Details

Predicted MW: 36kd

Western blotting: 1:500-1:3000

Immunofluorescence: 1:100-1:200

Images



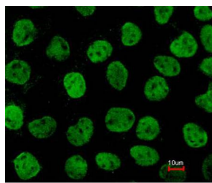
Sample (30 ug of whole cell lysate)

A: A549

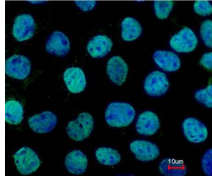
10% SDS PAGE

Primary antibody diluted at 1: 3000

Immunofluorescence analysis of paraformaldehyde-fixed A431, using APE1 antibody at 1: 200 dilution.



Merged with DNA probe



Background

Apurinic/aprimidinic (AP) sites occur frequently in DNA molecules by spontaneous hydrolysis, by DNA damaging agents or by DNA glycosylases that remove specific abnormal bases. AP sites are pre-mutagenic lesions that can prevent normal DNA replication so the cell contains systems to identify and repair such sites. Class II AP endonucleases cleave the phosphodiester backbone 5' to the AP site. This gene encodes the major AP endonuclease in human cells. Splice variants have been found for this gene; all encode the same protein. [provided by RefSeq]

Note: This product is for in vitro research use only