

SDC2 Antibody

Catalog No: #43692

Orders: order@signalwayantibody.comSupport: tech@signalwayantibody.com

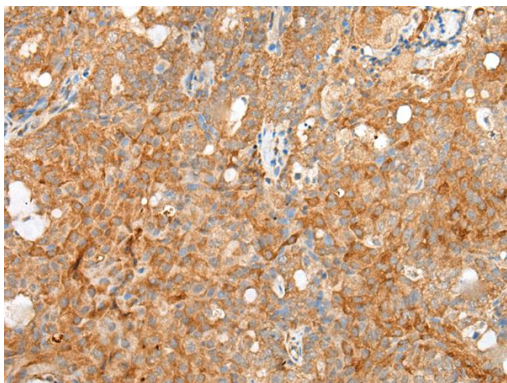
Description

Product Name	SDC2 Antibody
Host Species	Rabbit
Clonality	Polyclonal
Purification	Antigen affinity purification
Applications	IHC
Species Reactivity	Hu Ms Rt
Specificity	The antibody detects endogenous levels of total SDC2 protein.
Immunogen Type	peptide
Immunogen Description	Synthetic peptide of human SDC2
Target Name	SDC2
Other Names	HSPG; CD362; HSPG1; SYND2
Accession No.	Swiss-Prot#: P34741NCBI Gene ID: 6383
Uniprot	P34741
GeneID	6383;
Concentration	0.5mg/ml
Formulation	Rabbit IgG in pH7.4 PBS, 0.05% NaN ₃ , 40% Glycerol.
Storage	Store at -20°C

Application Details

Immunohistochemistry: 1: 20-100

Images



The image on the left is immunohistochemistry of paraffin-embedded Human ovarian cancer tissue using SDC2 Antibody at dilution 1/20, on the right is treated with synthetic peptide. (Original magnification: x200)

Background

The protein encoded by this gene is a transmembrane (type I) heparan sulfate proteoglycan and is a member of the syndecan proteoglycan family. The syndecans mediate cell binding, cell signaling, and cytoskeletal organization and syndecan receptors are required for internalization of the HIV-1 tat protein. The syndecan-2 protein functions as an integral membrane protein and participates in cell proliferation, cell migration and cell-matrix interactions via its receptor for extracellular matrix proteins. Altered syndecan-2 expression has been detected in several different tumor types.

Note: This product is for in vitro research use only