

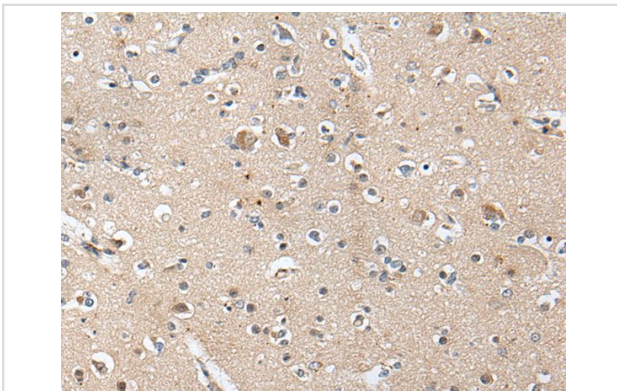
Description

Product Name	ACAN Antibody
Host Species	Rabbit
Clonality	Polyclonal
Purification	Antigen affinity purification
Applications	IHC
Species Reactivity	Hu
Specificity	The antibody detects endogenous levels of total ACAN protein.
Immunogen Type	peptide
Immunogen Description	Synthetic peptide of human ACAN
Target Name	ACAN
Other Names	AGC1; SEDK; AGCAN; CSPG1; MSK16; CSPGCP
Accession No.	Swiss-Prot#: P16112NCBI Gene ID: 176
Uniprot	P16112
GeneID	176;
Concentration	0.5mg/ml
Formulation	Rabbit IgG in pH7.4 PBS, 0.05% NaN ₃ , 40% Glycerol.
Storage	Store at -20°C

Application Details

Immunohistochemistry: 1: 20-100

Images



The image on the left is immunohistochemistry of paraffin-embedded Human brain tissue using ACAN Antibody at dilution 1/20, on the right is treated with synthetic peptide. (Original magnification: x200)

Background

This gene is a member of the aggrecan/versican proteoglycan family. The encoded protein is an integral part of the extracellular matrix in cartilagenous tissue and it withstands compression in cartilage. Mutations in this gene may be involved in skeletal dysplasia and spinal degeneration. Multiple alternatively spliced transcript variants that encode different protein isoforms have been observed in this gene.

Note: This product is for in vitro research use only