

## PROK1 Antibody

Catalog No: #43709

Orders: order@signalwayantibody.com

Support: tech@signalwayantibody.com

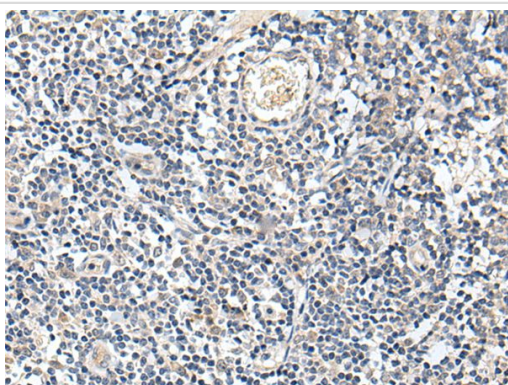
## Description

Product Name	PROK1 Antibody
Host Species	Rabbit
Clonality	Polyclonal
Purification	Antigen affinity purification
Applications	IHC
Species Reactivity	Hu
Specificity	The antibody detects endogenous levels of total PROK1 protein.
Immunogen Type	peptide
Immunogen Description	Synthetic peptide of human PROK1
Target Name	PROK1
Other Names	PK1; PRK1; EGVEGF
Accession No.	Swiss-Prot#: P58294NCBI Gene ID: 84432
Uniprot	P58294
GeneID	84432;
Concentration	0.8mg/ml
Formulation	Rabbit IgG in pH7.4 PBS, 0.05% NaN <sub>3</sub> , 40% Glycerol.
Storage	Store at -20°C

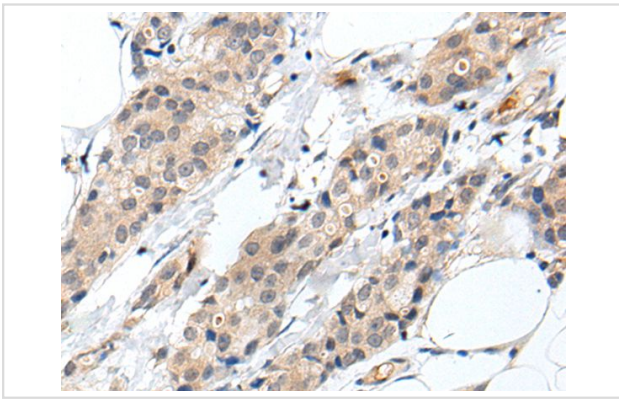
## Application Details

Immunohistochemistry: 1: 20-100

## Images



The image on the left is immunohistochemistry of paraffin-embedded Human tonsil tissue using PROK1 Antibody at dilution 1/30, on the right is treated with synthetic peptide. (Original magnification: x200)



The image on the left is immunohistochemistry of paraffin-embedded Human breast cancer tissue using PROK1 Antibody at dilution 1/30, on the right is treated with synthetic peptide. (Original magnification: x200)

## Background

The protein encoded by this gene induces proliferation, migration, and fenestration (the formation of membrane discontinuities) in capillary endothelial cells derived from endocrine glands. It has little or no effect on a variety of other endothelial and non-endothelial cell types. Its expression is restricted to the steroidogenic glands (ovary, testis, adrenal, and placenta), is induced by hypoxia, and often complementary to the expression of vascular endothelial growth factor (VEGF), suggesting that these molecules function in a coordinated manner.?

Note: This product is for in vitro research use only