

## PTOV1 Antibody

Catalog No: #43710

Orders: [order@signalwayantibody.com](mailto:order@signalwayantibody.com)Support: [tech@signalwayantibody.com](mailto:tech@signalwayantibody.com)

## Description

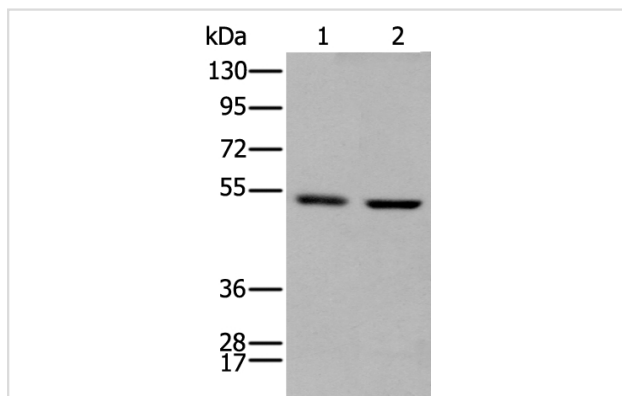
Product Name	PTOV1 Antibody
Host Species	Rabbit
Clonality	Polyclonal
Purification	Antigen affinity purification
Applications	IHC WB
Species Reactivity	Hu Ms Rt
Specificity	The antibody detects endogenous levels of total PTOV1 protein.
Immunogen Type	peptide
Immunogen Description	Synthetic peptide of human PTOV1
Target Name	PTOV1
Other Names	ACID2; PTOV-1
Accession No.	Swiss-Prot#: Q86YD1NCBI Gene ID: 53635
Uniprot	Q86YD1
GeneID	53635;
Calculated MW	47kd
Concentration	0.7mg/ml
Formulation	Rabbit IgG in pH7.4 PBS, 0.05% NaN <sub>3</sub> , 40% Glycerol.
Storage	Store at -20°C

## Application Details

Western blotting: 1:200-1000

Immunohistochemistry: 1: 20-100

## Images



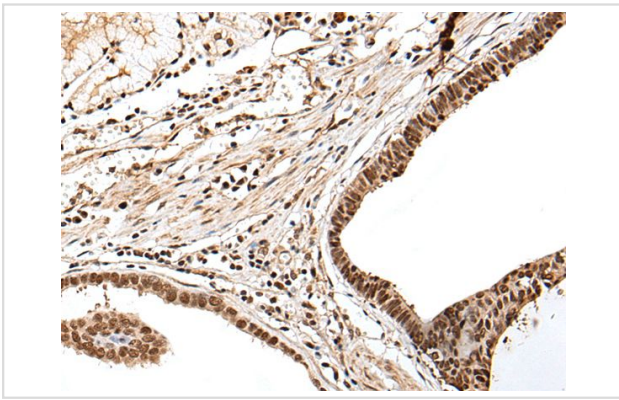
Gel: 8%SDS-PAGE

Lysate: 40 µg, Lane 1-2: Mouse brain tissue and Rat brain tissue lysates,

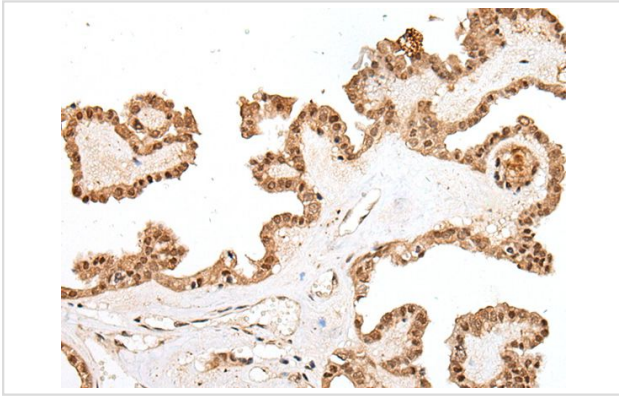
Primary antibody:PTOV1 antibody at dilution 1/300 dilution,

Secondary antibody: Goat anti rabbit IgG at 1/8000 dilution,

Exposure time: 40 seconds



The image on the left is immunohistochemistry of paraffin-embedded Human gastric cancer tissue using PTOV1 Antibody at dilution 1/25, on the right is treated with synthetic peptide. (Original magnification: x200)



The image on the left is immunohistochemistry of paraffin-embedded Human thyroid cancer tissue using PTOV1 Antibody at dilution 1/25, on the right is treated with synthetic peptide. (Original magnification: x200)

## Background

This gene encodes a protein that was found to be overexpressed in prostate adenocarcinomas. The encoded protein was found to interact with the lipid raft protein flotillin-1 and shuttle it from the cytoplasm to the nucleus in a cell cycle dependent manner. Alternative splicing of this gene results in multiple transcript variants.

Note: This product is for in vitro research use only