

## MEN1 Antibody

Catalog No: #43716

Orders: order@signalwayantibody.com

Support: tech@signalwayantibody.com

## Description

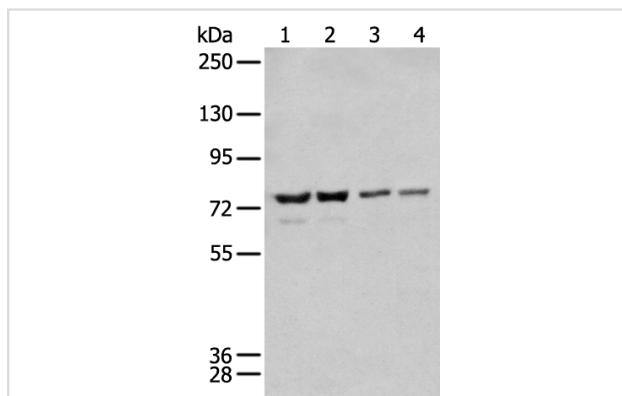
Product Name	MEN1 Antibody
Host Species	Rabbit
Clonality	Polyclonal
Purification	Antigen affinity purification
Applications	IHC WB
Species Reactivity	Hu Ms Rt
Specificity	The antibody detects endogenous levels of total MEN1 protein.
Immunogen Type	peptide
Immunogen Description	Synthetic peptide of human MEN1
Target Name	MEN1
Other Names	MEAI; SCG2
Accession No.	Swiss-Prot#: O00255NCBI Gene ID: 4221
Uniprot	O00255
GeneID	4221;
Calculated MW	68kd
Concentration	0.6mg/ml
Formulation	Rabbit IgG in pH7.4 PBS, 0.05% NaN <sub>3</sub> , 40% Glycerol.
Storage	Store at -20°C

## Application Details

Western blotting: 1:200-1000

Immunohistochemistry: 1: 20-100

## Images



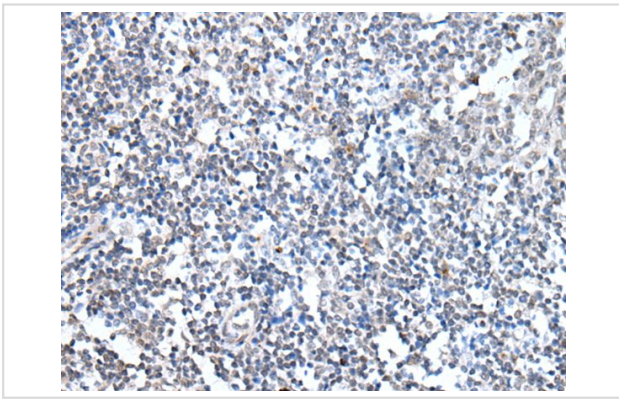
Gel: 6%SDS-PAGE

Lysate: 40 µg, Lane 1-4: K562BEB-HelaBEB-A431 and NIH/3T3 cell lysates,

Primary antibody: MEN1 antibody at dilution 1/200 dilution,

Secondary antibody: Goat anti rabbit IgG at 1/8000 dilution,

Exposure time: 10 seconds



The image on the left is immunohistochemistry of paraffin-embedded Human tonsil tissue using MEN1 Antibody at dilution 1/25, on the right is treated with synthetic peptide. (Original magnification: x200)

## Background

This gene encodes menin, a putative tumor suppressor associated with a syndrome known as multiple endocrine neoplasia type 1. In vitro studies have shown menin is localized to the nucleus, possesses two functional nuclear localization signals, and inhibits transcriptional activation by JunD, however, the function of this protein is not known. Two messages have been detected on northern blots but the larger message has not been characterized. Alternative splicing results in multiple transcript variants.

Note: This product is for in vitro research use only