

CANX Antibody

Catalog No: #43717

Orders: order@signalwayantibody.com

Support: tech@signalwayantibody.com

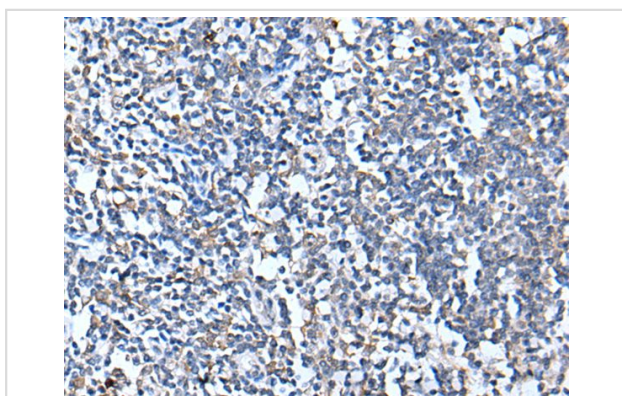
Description

Product Name	CANX Antibody
Host Species	Rabbit
Clonality	Polyclonal
Purification	Antigen affinity purification
Applications	IHC
Species Reactivity	Hu Ms Rt
Specificity	The antibody detects endogenous levels of total CANX protein.
Immunogen Type	peptide
Immunogen Description	Synthetic peptide of human CANX
Target Name	CANX
Other Names	CNX; P90; IP90
Accession No.	Swiss-Prot#: P27824NCBI Gene ID: 821
Uniprot	P27824
GeneID	821;
Concentration	1.3mg/ml
Formulation	Rabbit IgG in pH7.4 PBS, 0.05% NaN ₃ , 40% Glycerol.
Storage	Store at -20°C

Application Details

Immunohistochemistry: 1: 20-100

Images



The image on the left is immunohistochemistry of paraffin-embedded Human tonsil tissue using CANX Antibody at dilution 1/40, on the right is treated with synthetic peptide. (Original magnification: x200)

Background

This gene encodes a member of the calnexin family of molecular chaperones. The encoded protein is a calcium-binding, endoplasmic reticulum (ER)-associated protein that interacts transiently with newly synthesized N-linked glycoproteins, facilitating protein folding and assembly. It may also play a central role in the quality control of protein folding by retaining incorrectly folded protein subunits within the ER for degradation. Alternatively spliced transcript variants encoding the same protein have been described.?

Note: This product is for in vitro research use only