

DOK2 Antibody

Catalog No: #43719

Orders: order@signalwayantibody.comSupport: tech@signalwayantibody.com

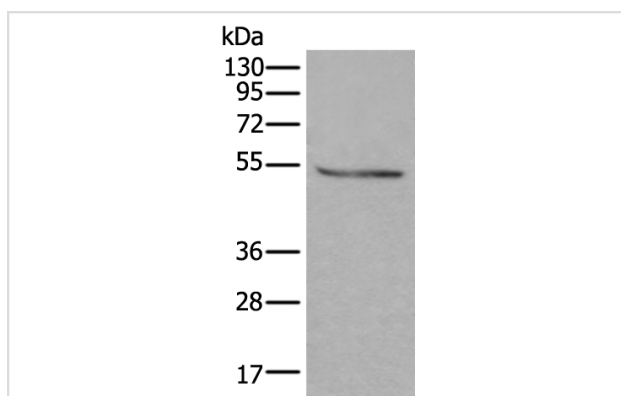
Description

Product Name	DOK2 Antibody
Host Species	Rabbit
Clonality	Polyclonal
Purification	Antigen affinity purification
Applications	WB
Species Reactivity	Hu
Specificity	The antibody detects endogenous levels of total DOK2 protein.
Immunogen Type	peptide
Immunogen Description	Synthetic peptide of human DOK2
Target Name	DOK2
Other Names	p56DOK; p56dok-2
Accession No.	Swiss-Prot#: O60496NCBI Gene ID: 9046
Uniprot	O60496
GeneID	9046;
Calculated MW	45kd
Concentration	0.4mg/ml
Formulation	Rabbit IgG in pH7.4 PBS, 0.05% NaN ₃ , 40% Glycerol.
Storage	Store at -20°C

Application Details

Western blotting: 1:200-1000

Images



Gel: 8%SDS-PAGE

Lysate: 40 µg, Lane: 293T cell lysate,

Primary antibody:DOK2 antibody at dilution 1/200,

Secondary antibody: Goat anti rabbit IgG at 1/8000 dilution,

Exposure time: 90 seconds

Background

The protein encoded by this gene is constitutively tyrosine phosphorylated in hematopoietic progenitors isolated from chronic myelogenous leukemia (CML) patients in the chronic phase. It may be a critical substrate for p210(bcr/abl), a chimeric protein whose presence is associated with CML. This

encoded protein binds p120 (RasGAP) from CML cells.

Note: This product is for in vitro research use only