

DUSP3 Antibody

Catalog No: #43721

Orders: order@signalwayantibody.comSupport: tech@signalwayantibody.com

Description

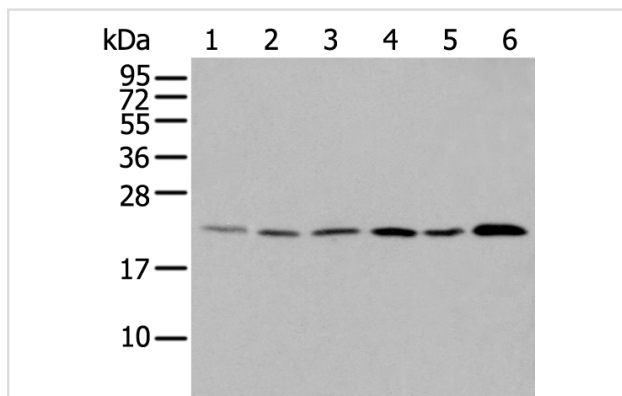
Product Name	DUSP3 Antibody
Host Species	Rabbit
Clonality	Polyclonal
Purification	Antigen affinity purification
Applications	IHC WB
Species Reactivity	Hu
Specificity	The antibody detects endogenous levels of total DUSP3 protein.
Immunogen Type	peptide
Immunogen Description	Synthetic peptide of human DUSP3
Target Name	DUSP3
Other Names	VHR
Accession No.	Swiss-Prot#: P51452NCBI Gene ID: 1845
Uniprot	P51452
GeneID	1845;
Calculated MW	20kd
Concentration	0.5mg/ml
Formulation	Rabbit IgG in pH7.4 PBS, 0.05% NaN ₃ , 40% Glycerol.
Storage	Store at -20°C

Application Details

Western blotting: 1:200-1000

Immunohistochemistry: 1: 20-100

Images



Gel: 12%SDS-PAGE

Lysate: 40 µg, Lane 1-6:

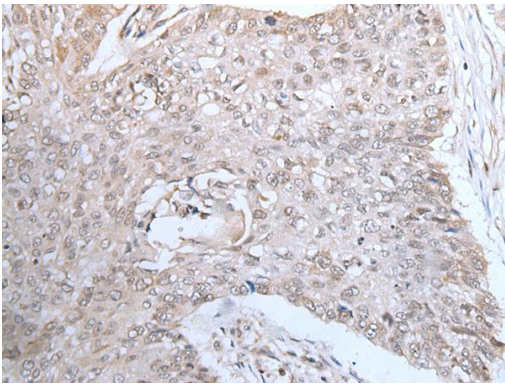
Jurkat, HeLa, K562 and HepG2

cell and Human fetal liver tissue lysates,

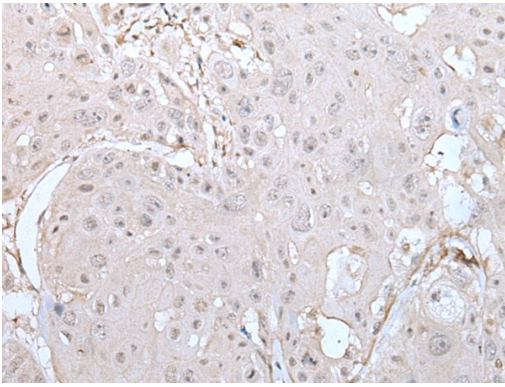
Primary antibody: DUSP3 antibody at dilution 1/250 dilution,

Secondary antibody: Goat anti rabbit IgG at 1/8000 dilution,

Exposure time: 30 seconds



The image on the left is immunohistochemistry of paraffin-embedded Human lung cancer tissue using DUSP3 Antibody at dilution 1/25, on the right is treated with synthetic peptide. (Original magnification: x200)



The image on the left is immunohistochemistry of paraffin-embedded Human esophagus cancer tissue using DUSP3 Antibody at dilution 1/25, on the right is treated with synthetic peptide. (Original magnification: x200)

Background

The protein encoded by this gene is a member of the dual specificity protein phosphatase subfamily. This gene maps in a region that contains the BRCA1 locus which confers susceptibility to breast and ovarian cancer. Although DUSP3 is expressed in both breast and ovarian tissues, mutation screening in breast cancer pedigrees and in sporadic tumors was negative, leading to the conclusion that this gene is not BRCA1.

Note: This product is for in vitro research use only