

GAS2L1 Antibody

Catalog No: #43726

Orders: order@signalwayantibody.comSupport: tech@signalwayantibody.com

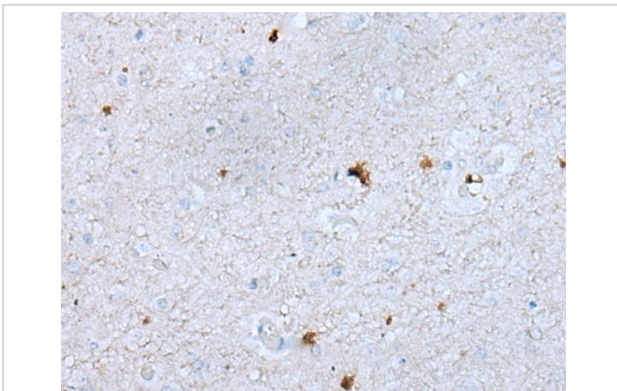
Description

Product Name	GAS2L1 Antibody
Host Species	Rabbit
Clonality	Polyclonal
Purification	Antigen affinity purification
Applications	IHC
Species Reactivity	Hu Ms
Specificity	The antibody detects endogenous levels of total GAS2L1 protein.
Immunogen Type	peptide
Immunogen Description	Synthetic peptide of human GAS2L1
Target Name	GAS2L1
Other Names	GAR22
Accession No.	Swiss-Prot#: Q99501NCBI Gene ID: 10634
Uniprot	Q99501
GeneID	10634;
Concentration	0.8mg/ml
Formulation	Rabbit IgG in pH7.4 PBS, 0.05% NaN ₃ , 40% Glycerol.
Storage	Store at -20°C

Application Details

Immunohistochemistry: 1: 10-50

Images



The image on the left is immunohistochemistry of paraffin-embedded Human brain tissue using GAS2L1 Antibody at dilution 1/30, on the right is treated with synthetic peptide. (Original magnification: x200)

Background

This gene encodes a member of the growth arrest-specific 2 protein family. This protein binds components of the cytoskeleton and may be involved in mediating interactions between microtubules and microfilaments. Alternate splicing results in multiple transcript variants. A pseudogene of this gene is found on chromosome 9.?

Note: This product is for in vitro research use only