

CXCL6 Antibody

Catalog No: #43727

Orders: order@signalwayantibody.com

Support: tech@signalwayantibody.com

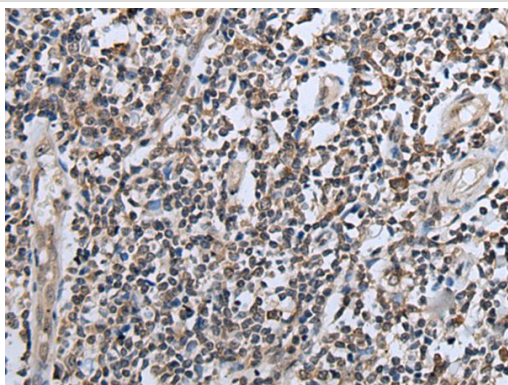
Description

Product Name	CXCL6 Antibody
Host Species	Rabbit
Clonality	Polyclonal
Purification	Antigen affinity purification
Applications	IHC
Species Reactivity	Hu
Specificity	The antibody detects endogenous levels of total CXCL6 protein.
Immunogen Type	peptide
Immunogen Description	Synthetic peptide of human CXCL6
Target Name	CXCL6
Other Names	GCP2; CKA-3; GCP-2; SCYB6
Accession No.	Swiss-Prot#: P80162NCBI Gene ID: 6372
Uniprot	P80162
GeneID	6372;
Concentration	1.9mg/ml
Formulation	Rabbit IgG in pH7.4 PBS, 0.05% NaN ₃ , 40% Glycerol.
Storage	Store at -20°C

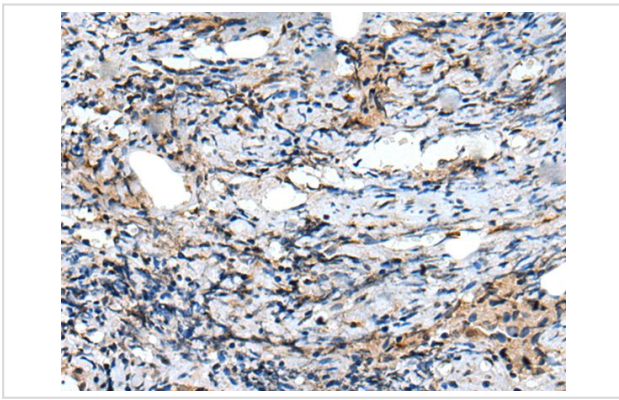
Application Details

Immunohistochemistry: 1: 100-300

Images



The image on the left is immunohistochemistry of paraffin-embedded Human tonsil tissue using CXCL6 Antibody at dilution 1/100, on the right is treated with synthetic peptide. (Original magnification: x200)



The image on the left is immunohistochemistry of paraffin-embedded Human prostate cancer tissue using CXCL6 Antibody at dilution 1/100, on the right is treated with synthetic peptide. (Original magnification: x200)

Background

Chemotactic for neutrophil granulocytes. Signals through binding and activation of its receptors (CXCR1 and CXCR2). In addition to its chemotactic and angiogenic properties, it has strong antibacterial activity against Gram-positive and Gram-negative bacteria (90-fold-higher when compared to CXCL5 and CXCL7).

Note: This product is for in vitro research use only