

HOXD10 Antibody

Catalog No: #43732

Orders: order@signalwayantibody.comSupport: tech@signalwayantibody.com

Description

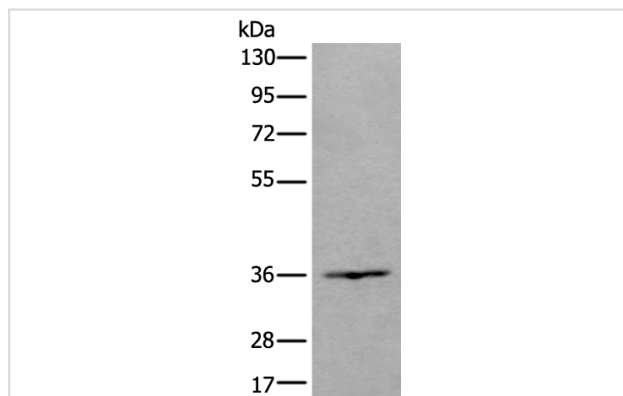
Product Name	HOXD10 Antibody
Host Species	Rabbit
Clonality	Polyclonal
Purification	Antigen affinity purification
Applications	IHC WB
Species Reactivity	Hu Ms
Specificity	The antibody detects endogenous levels of total HOXD10 protein.
Immunogen Type	peptide
Immunogen Description	Synthetic peptide of human HOXD10
Target Name	HOXD10
Other Names	HOX4; HOX4D; HOX4E; Hox-4.4
Accession No.	Swiss-Prot#: P28358NCBI Gene ID: 3236
Uniprot	P28358
GeneID	3236;
Calculated MW	38kd
Concentration	0.7mg/ml
Formulation	Rabbit IgG in pH7.4 PBS, 0.05% NaN ₃ , 40% Glycerol.
Storage	Store at -20°C

Application Details

Western blotting: 1:200-1000

Immunohistochemistry: 1: 20-100

Images



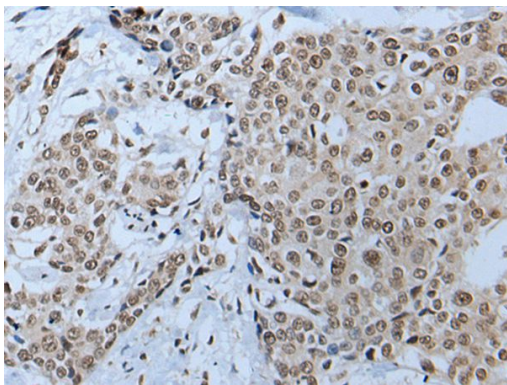
Gel: 8%SDS-PAGE

Lysate: 40 µg, Lane: Hela cell lysate,

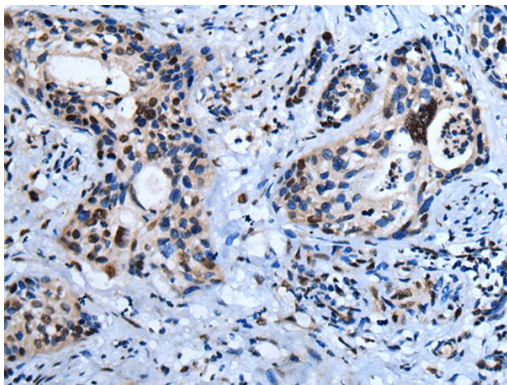
Primary antibody:HOXD10 antibody at dilution 1/250,

Secondary antibody: Goat anti rabbit IgG at 1/8000 dilution,

Exposure time: 20 seconds



The image on the left is immunohistochemistry of paraffin-embedded Human prostate cancer tissue using HOXD10 Antibody at dilution 1/25, on the right is treated with synthetic peptide. (Original magnification: x200)



The image on the left is immunohistochemistry of paraffin-embedded Human cervical cancer tissue using HOXD10 Antibody at dilution 1/25, on the right is treated with synthetic peptide. (Original magnification: x200)

Background

This gene is a member of the Abd-B homeobox family and encodes a protein with a homeobox DNA-binding domain. It is included in a cluster of homeobox D genes located on chromosome 2. The encoded nuclear protein functions as a sequence-specific transcription factor that is expressed in the developing limb buds and is involved in differentiation and limb development. Mutations in this gene have been associated with Wilm's tumor and congenital vertical talus (also known as "rocker-bottom foot" deformity or congenital convex pes valgus) and/or a foot deformity resembling that seen in Charcot-Marie-Tooth disease.

Note: This product is for in vitro research use only