

HSPB1 Antibody

Catalog No: #43733

Orders: order@signalwayantibody.com

Support: tech@signalwayantibody.com

Description

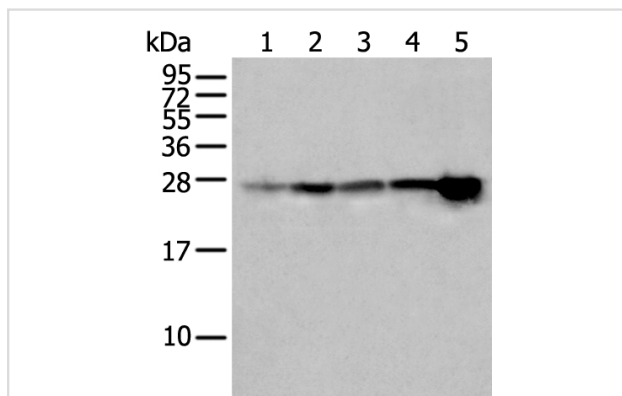
Product Name	HSPB1 Antibody
Host Species	Rabbit
Clonality	Polyclonal
Purification	Antigen affinity purification
Applications	IHC WB
Species Reactivity	Hu
Specificity	The antibody detects endogenous levels of total HSPB1 protein.
Immunogen Type	peptide
Immunogen Description	Synthetic peptide of human HSPB1
Target Name	HSPB1
Other Names	CMT2F; HMN2B; HSP27; HSP28; Hsp25; SRP27; HS.76067; HEL-S-102
Accession No.	Swiss-Prot#: P04792NCBI Gene ID: 3315
Uniprot	P04792
GeneID	3315;
Calculated MW	23kd
Concentration	0.7mg/ml
Formulation	Rabbit IgG in pH7.4 PBS, 0.05% NaN ₃ , 40% Glycerol.
Storage	Store at -20°C

Application Details

Western blotting: 1:200-1000

Immunohistochemistry: 1: 20-100

Images



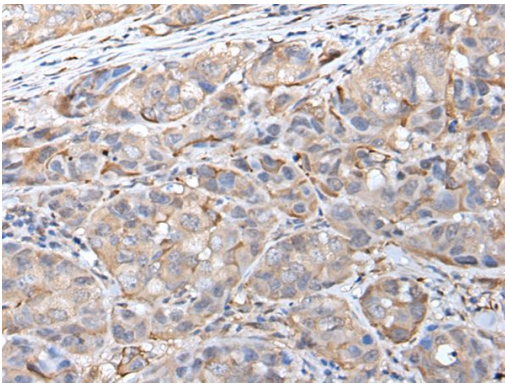
Gel: 12%SDS-PAGE

Lysate: 40 µg, Lane 1-5: 293T, HeLa, K562 and HEPG2 cell lysates,

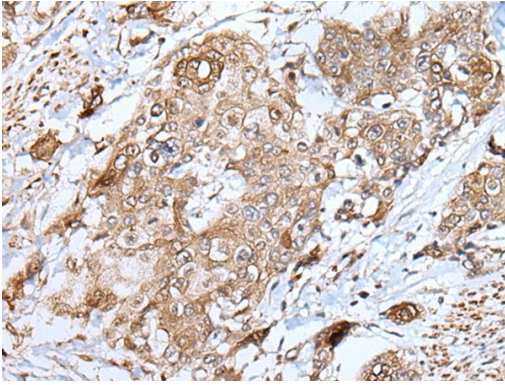
Primary antibody: HSPB1 antibody at dilution 1/250 dilution,

Secondary antibody: Goat anti rabbit IgG at 1/8000 dilution,

Exposure time: 2 seconds



The image on the left is immunohistochemistry of paraffin-embedded Human breast cancer tissue using HSPB1 Antibody at dilution 1/25, on the right is treated with synthetic peptide. (Original magnification: x200)



The image on the left is immunohistochemistry of paraffin-embedded Human prostate cancer tissue using HSPB1 Antibody at dilution 1/25, on the right is treated with synthetic peptide. (Original magnification: x200)

Background

The protein encoded by this gene is induced by environmental stress and developmental changes. The encoded protein is involved in stress resistance and actin organization and translocates from the cytoplasm to the nucleus upon stress induction. Defects in this gene are a cause of Charcot-Marie-Tooth disease type 2F (CMT2F) and distal hereditary motor neuropathy (dHMN).

Note: This product is for in vitro research use only