

## IGF1R Antibody

Catalog No: #43735

Orders: order@signalwayantibody.com

Support: tech@signalwayantibody.com

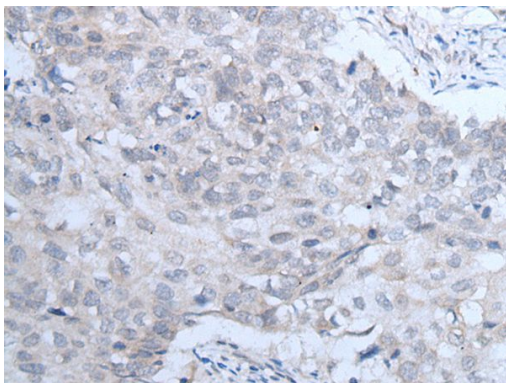
## Description

Product Name	IGF1R Antibody
Host Species	Rabbit
Clonality	Polyclonal
Purification	Antigen affinity purification
Applications	IHC
Species Reactivity	Hu
Specificity	The antibody detects endogenous levels of total IGF1R protein.
Immunogen Type	peptide
Immunogen Description	Synthetic peptide of human IGF1R
Target Name	IGF1R
Other Names	IGFR; CD221; IGFIR; JTK13
Accession No.	Swiss-Prot#: P08069NCBI Gene ID: 3480
Uniprot	P08069
GeneID	3480;
Concentration	0.8mg/ml
Formulation	Rabbit IgG in pH7.4 PBS, 0.05% NaN <sub>3</sub> , 40% Glycerol.
Storage	Store at -20°C

## Application Details

Immunohistochemistry: 1: 20-100

## Images



The image on the left is immunohistochemistry of paraffin-embedded Human lung cancer tissue using IGF1R Antibody at dilution 1/30, on the right is treated with synthetic peptide. (Original magnification: x200)

## Background

This receptor binds insulin-like growth factor with a high affinity. It has tyrosine kinase activity. The insulin-like growth factor I receptor plays a critical role in transformation events. Cleavage of the precursor generates alpha and beta subunits. It is highly overexpressed in most malignant tissues where it functions as an anti-apoptotic agent by enhancing cell survival. Alternatively spliced transcript variants encoding distinct isoforms have been found for this gene.?

---

Note: This product is for in vitro research use only