

IGSF11 Antibody

Catalog No: #43736

Orders: order@signalwayantibody.comSupport: tech@signalwayantibody.com

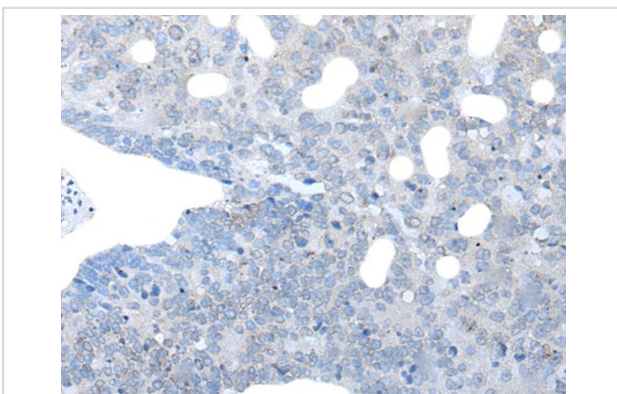
Description

Product Name	IGSF11 Antibody
Host Species	Rabbit
Clonality	Polyclonal
Purification	Antigen affinity purification
Applications	IHC
Species Reactivity	Hu
Specificity	The antibody detects endogenous levels of total IGSF11 protein.
Immunogen Type	peptide
Immunogen Description	Synthetic peptide of human IGSF11
Target Name	IGSF11
Other Names	CT119; VSIG3; Igsf13; BT-IgSF; CXADRL1
Accession No.	Swiss-Prot#: Q5DX21NCBI Gene ID: 152404
Uniprot	Q5DX21
GeneID	152404;
Concentration	0.7mg/ml
Formulation	Rabbit IgG in pH7.4 PBS, 0.05% NaN ₃ , 40% Glycerol.
Storage	Store at -20°C

Application Details

Immunohistochemistry: 1: 20-100

Images



The image on the left is immunohistochemistry of paraffin-embedded Human colorectal cancer tissue using IGSF11 Antibody at dilution 1/25, on the right is treated with synthetic peptide. (Original magnification: x200)

Background

IGSF11 is an immunoglobulin (Ig) superfamily member that is preferentially expressed in brain and testis. It shares significant homology with coxsackievirus and adenovirus receptor (CXADR; MIM 602621) and endothelial cell-selective adhesion molecule (ESAM).

Note: This product is for in vitro research use only