

## IQGAP1 Antibody

Catalog No: #43737

Orders: [order@signalwayantibody.com](mailto:order@signalwayantibody.com)Support: [tech@signalwayantibody.com](mailto:tech@signalwayantibody.com)

## Description

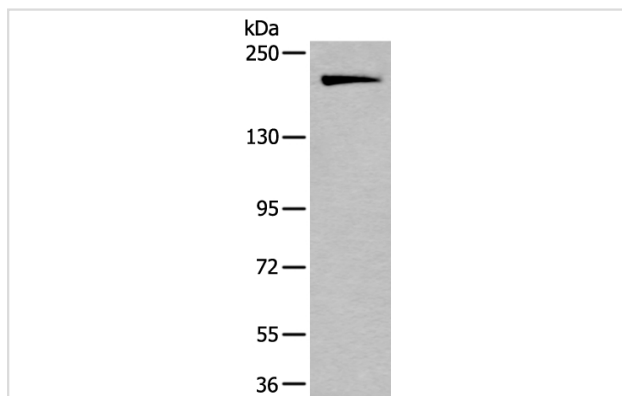
Product Name	IQGAP1 Antibody
Host Species	Rabbit
Clonality	Polyclonal
Purification	Antigen affinity purification
Applications	IHC WB
Species Reactivity	Hu Ms
Specificity	The antibody detects endogenous levels of total IQGAP1 protein.
Immunogen Type	peptide
Immunogen Description	Synthetic peptide of human IQGAP1
Target Name	IQGAP1
Other Names	SAR1; p195; HUMORFA01
Accession No.	Swiss-Prot#: P46940NCBI Gene ID: 8826
Uniprot	P46940
GeneID	8826;
Calculated MW	189kd
Concentration	0.8mg/ml
Formulation	Rabbit IgG in pH7.4 PBS, 0.05% NaN <sub>3</sub> , 40% Glycerol.
Storage	Store at -20°C

## Application Details

Western blotting: 1:200-1000

Immunohistochemistry: 1: 20-100

## Images



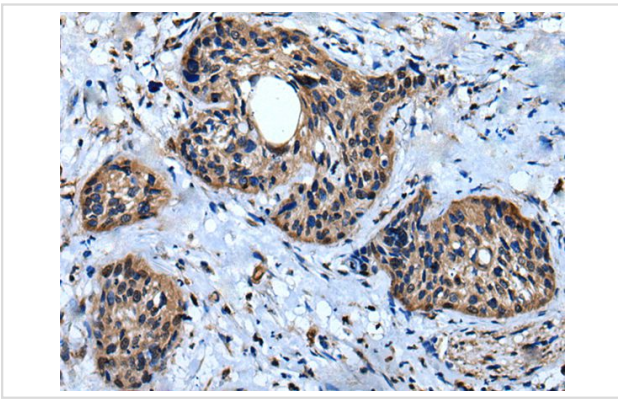
Gel: 6%SDS-PAGE

Lysate: 40 µg, Lane: HUVEC cell lysate,

Primary antibody:IQGAP1 antibody at dilution 1/300,

Secondary antibody: Goat anti rabbit IgG at 1/8000 dilution,

Exposure time: 1 minute



The image on the left is immunohistochemistry of paraffin-embedded Human cervical cancer tissue using IQGAP1 Antibody at dilution 1/30, on the right is treated with synthetic peptide. (Original magnification: x200)

## Background

This gene encodes a member of the IQGAP family. The protein contains four IQ domains, one calponin homology domain, one Ras-GAP domain and one WW domain. It interacts with components of the cytoskeleton, with cell adhesion molecules, and with several signaling molecules to regulate cell morphology and motility. Expression of the protein is upregulated by gene amplification in two gastric cancer cell lines.

Note: This product is for in vitro research use only