

LILRB5 Antibody

Catalog No: #43739

Orders: order@signalwayantibody.comSupport: tech@signalwayantibody.com

Description

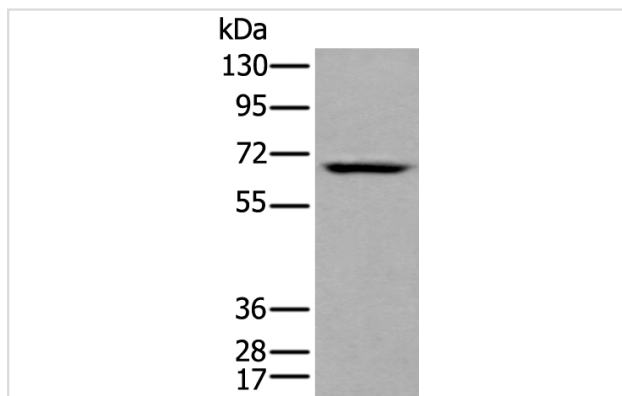
Product Name	LILRB5 Antibody
Host Species	Rabbit
Clonality	Polyclonal
Purification	Antigen affinity purification
Applications	IHC WB
Species Reactivity	Hu
Specificity	The antibody detects endogenous levels of total LILRB5 protein.
Immunogen Type	peptide
Immunogen Description	Synthetic peptide of human LILRB5
Target Name	LILRB5
Other Names	LIR8; CD85C; LIR-8
Accession No.	Swiss-Prot#: O75023NCBI Gene ID: 10990
Uniprot	O75023
GeneID	10990;
Calculated MW	64kd
Concentration	0.5mg/ml
Formulation	Rabbit IgG in pH7.4 PBS, 0.05% NaN ₃ , 40% Glycerol.
Storage	Store at -20°C

Application Details

Western blotting: 1:200-1000

Immunohistochemistry: 1: 20-100

Images



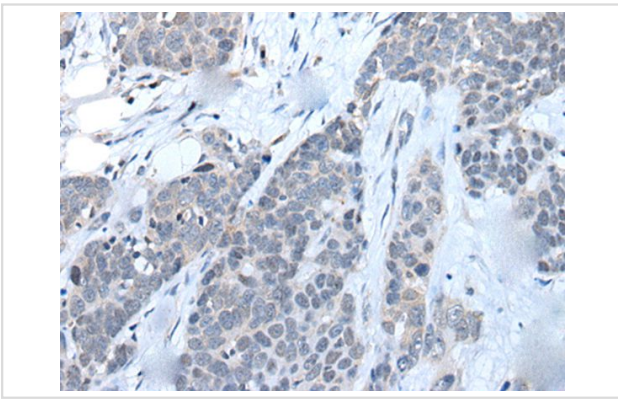
Gel: 8%SDS-PAGE

Lysate: 40 µg, Lane: SKOV3 cell lysate,

Primary antibody:LILRB5 antibody at dilution 1/200 dilution,

Secondary antibody: Goat anti rabbit IgG at 1/8000 dilution,

Exposure time: 50 seconds



The image on the left is immunohistochemistry of paraffin-embedded Human thyroid cancer tissue using LILRB5 Antibody at dilution 1/25, on the right is treated with synthetic peptide. (Original magnification: x200)

Background

This gene is a member of the leukocyte immunoglobulin-like receptor (LIR) family, which is found in a gene cluster at chromosomal region 19q13.4. The encoded protein belongs to the subfamily B class of LIR receptors which contain two or four extracellular immunoglobulin domains, a transmembrane domain, and two to four cytoplasmic immunoreceptor tyrosine-based inhibitory motifs (ITIMs). Several other LIR subfamily B receptors are expressed on immune cells where they bind to MHC class I molecules on antigen-presenting cells and inhibit stimulation of an immune response. Multiple transcript variants encoding different isoforms have been found for this gene.

Note: This product is for in vitro research use only