

## KLF6 Antibody

Catalog No: #43742

Orders: order@signalwayantibody.com

Support: tech@signalwayantibody.com

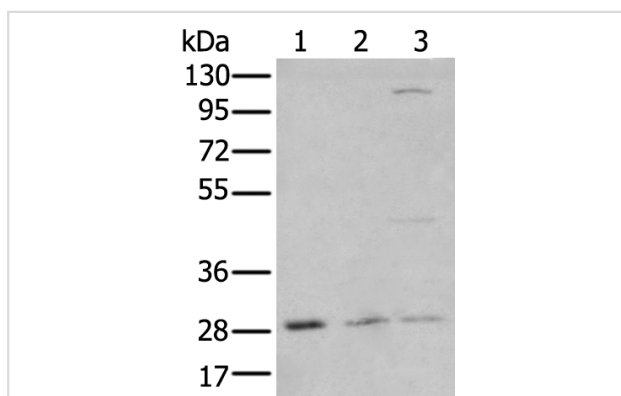
## Description

Product Name	KLF6 Antibody
Host Species	Rabbit
Clonality	Polyclonal
Purification	Antigen affinity purification
Applications	WB
Species Reactivity	Hu Ms Rt
Specificity	The antibody detects endogenous levels of total KLF6 protein.
Immunogen Description	Synthetic peptide of human KLF6
Target Name	KLF6
Other Names	GBF; ZF9; BCD1; CBA1; CPBP; PAC1; ST12; COPEB
Accession No.	Swiss-Prot#: Q99612NCBI Gene ID: 1316
Uniprot	Q99612
GeneID	1316;
Calculated MW	32kd
Concentration	0.6mg/ml
Formulation	Rabbit IgG in pH7.4 PBS, 0.05% NaN <sub>3</sub> , 40% Glycerol.
Storage	Store at -20°C

## Application Details

Western blotting: 1:200-1000

## Images



Gel: 8%SDS-PAGE

Lysate: 40 µg, Lane 1-3: 293T, HeLa and HepG2 cell lysates,

Primary antibody: KLF6 antibody at dilution 1/200 dilution,  
Secondary antibody: Goat anti rabbit IgG at 1/8000 dilution,  
Exposure time: 20S

## Background

This gene encodes a member of the Kruppel-like family of transcription factors. The zinc finger protein is a transcriptional activator, and functions as a tumor suppressor. Multiple transcript variants encoding different isoforms have been found for this gene, some of which are implicated in carcinogenesis.

---

Note: This product is for in vitro research use only