

MAGEB1 Antibody

Catalog No: #43746

Orders: order@signalwayantibody.comSupport: tech@signalwayantibody.com

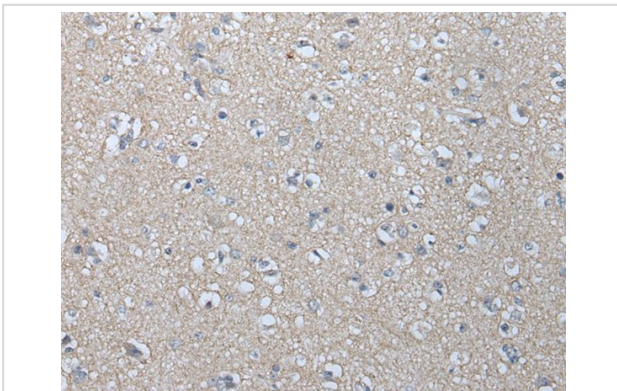
Description

Product Name	MAGEB1 Antibody
Host Species	Rabbit
Clonality	Polyclonal
Purification	Antigen affinity purification
Applications	IHC
Species Reactivity	Hu
Specificity	The antibody detects endogenous levels of total MAGEB1 protein.
Immunogen Type	peptide
Immunogen Description	Synthetic peptide of human MAGEB1
Target Name	MAGEB1
Other Names	CT3.1; DAM10; MAGEL1; MAGE-Xp
Accession No.	Swiss-Prot#: P43366NCBI Gene ID: 4112
Uniprot	P43366
GeneID	4112;
Concentration	0.2mg/ml
Formulation	Rabbit IgG in pH7.4 PBS, 0.05% NaN ₃ , 40% Glycerol.
Storage	Store at -20°C

Application Details

Immunohistochemistry: 1: 20-100

Images



The image on the left is immunohistochemistry of paraffin-embedded Human brain tissue using MAGEB1 Antibody at dilution 1/20, on the right is treated with synthetic peptide. (Original magnification: x200)

Background

This gene is a member of the MAGEB gene family. The members of this family have their entire coding sequences located in the last exon, and the encoded proteins show 50 to 68% sequence identity to each other. The promoters and first exons of the MAGEB genes show considerable variability, suggesting that the existence of this gene family enables the same function to be expressed under different transcriptional controls. This gene is localized in the DSS (dosage-sensitive sex reversal) critical region, and expressed in testis and in a significant fraction of tumors of various histological

types. This gene and other MAGEB members are clustered on chromosome Xp22-p21. Multiple alternatively spliced transcript variants encoding the same protein have been found for this gene, however, the full length nature of some variants has not been defined.?

Note: This product is for in vitro research use only