

CSF1 Antibody

Catalog No: #43751

Orders: order@signalwayantibody.comSupport: tech@signalwayantibody.com

Description

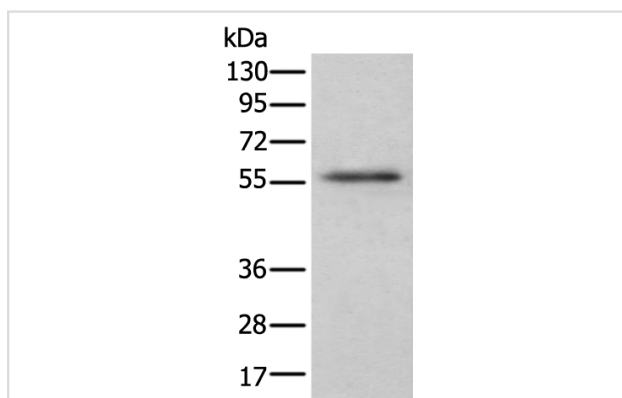
Product Name	CSF1 Antibody
Host Species	Rabbit
Clonality	Polyclonal
Purification	Antigen affinity purification
Applications	IHC WB
Species Reactivity	Hu
Specificity	The antibody detects endogenous levels of total CSF1 protein.
Immunogen Type	peptide
Immunogen Description	Synthetic peptide of human CSF1
Target Name	CSF1
Other Names	MCSF; CSF-1
Accession No.	Swiss-Prot#: P09603NCBI Gene ID: 1435
Uniprot	P09603
GeneID	1435;
Calculated MW	60kd
Concentration	0.7mg/ml
Formulation	Rabbit IgG in pH7.4 PBS, 0.05% NaN ₃ , 40% Glycerol.
Storage	Store at -20°C

Application Details

Western blotting: 1:200-1000

Immunohistochemistry: 1: 20-100

Images



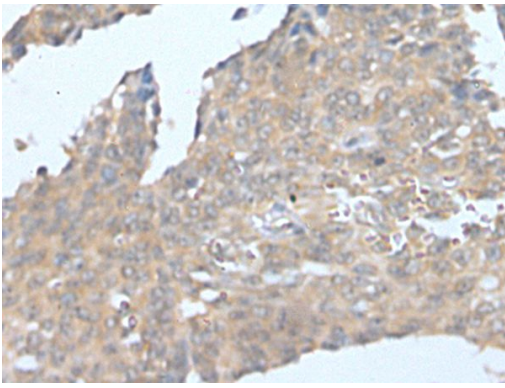
Gel: 6%SDS-PAGE

Lysate: 40 µg, Lane: Human spleen tissue lysate,

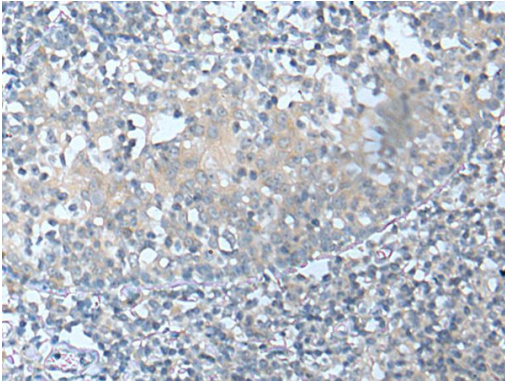
Primary antibody:CSF1 antibody at dilution 1/250 dilution,

Secondary antibody: Goat anti rabbit IgG at 1/8000 dilution,

Exposure time: 3 minutes



The image on the left is immunohistochemistry of paraffin-embedded Human ovarian cancer tissue using CSF1 Antibody at dilution 1/25, on the right is treated with synthetic peptide. (Original magnification: x200)



The image on the left is immunohistochemistry of paraffin-embedded Human tonsil tissue using CSF1 Antibody at dilution 1/25, on the right is treated with synthetic peptide. (Original magnification: x200)

Background

The protein encoded by this gene is a cytokine that controls the production, differentiation, and function of macrophages. The active form of the protein is found extracellularly as a disulfide-linked homodimer, and is thought to be produced by proteolytic cleavage of membrane-bound precursors. The encoded protein may be involved in development of the placenta. Alternate splicing results in multiple transcript variants.

Note: This product is for in vitro research use only