

## MEF2D Antibody

Catalog No: #43752

Orders: [order@signalwayantibody.com](mailto:order@signalwayantibody.com)Support: [tech@signalwayantibody.com](mailto:tech@signalwayantibody.com)

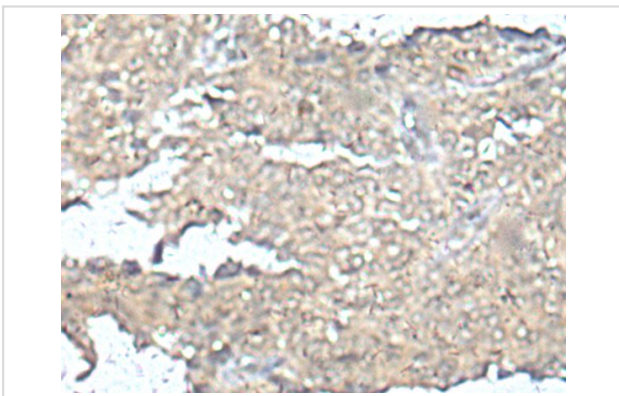
## Description

Product Name	MEF2D Antibody
Host Species	Rabbit
Clonality	Polyclonal
Purification	Antigen affinity purification
Applications	IHC
Species Reactivity	Hu Ms Rt
Specificity	The antibody detects endogenous levels of total MEF2D protein.
Immunogen Type	peptide
Immunogen Description	Synthetic peptide of human MEF2D
Target Name	MEF2D
Accession No.	Swiss-Prot#: Q14814NCBI Gene ID: 4209
Uniprot	Q14814
GeneID	4209;
Concentration	1.1mg/ml
Formulation	Rabbit IgG in pH7.4 PBS, 0.05% NaN <sub>3</sub> , 40% Glycerol.
Storage	Store at -20°C

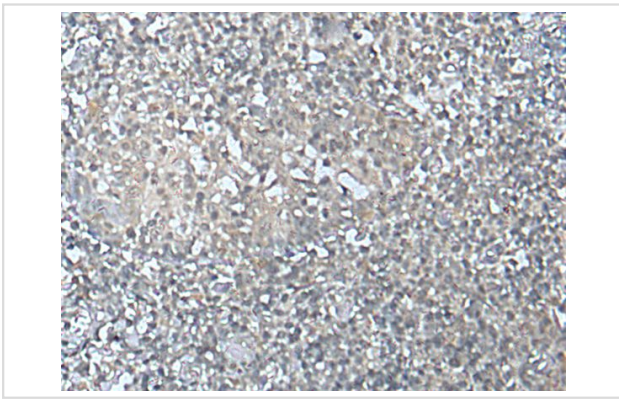
## Application Details

Immunohistochemistry: 1: 100-200

## Images



The image on the left is immunohistochemistry of paraffin-embedded Human ovarian cancer tissue using MEF2D Antibody at dilution 1/100, on the right is treated with synthetic peptide. (Original magnification: x200)



The image on the left is immunohistochemistry of paraffin-embedded Human tonsil tissue using MEF2D Antibody at dilution 1/100, on the right is treated with synthetic peptide. (Original magnification: x200)

## Background

This gene is a member of the myocyte-specific enhancer factor 2 (MEF2) family of transcription factors. Members of this family are involved in control of muscle and neuronal cell differentiation and development, and are regulated by class II histone deacetylases. Fusions of the encoded protein with Deleted in Azoospermia-Associated Protein 1 (DAZAP1) due to a translocation have been found in an acute lymphoblastic leukemia cell line, suggesting a role in leukemogenesis. The encoded protein may also be involved in Parkinson disease and myotonic dystrophy. Alternative splicing results in multiple transcript variants.?

Note: This product is for in vitro research use only