

LHCGR Antibody

Catalog No: #43757

Orders: order@signalwayantibody.comSupport: tech@signalwayantibody.com

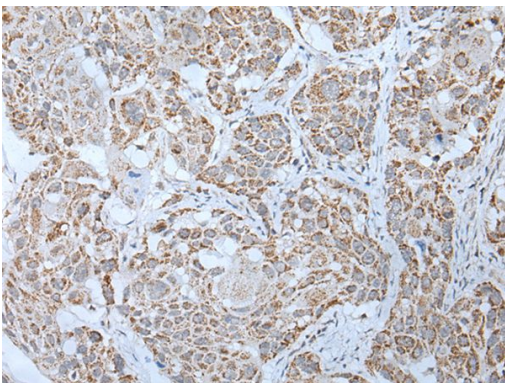
Description

Product Name	LHCGR Antibody
Host Species	Rabbit
Clonality	Polyclonal
Purification	Antigen affinity purification
Applications	IHC
Species Reactivity	Hu
Specificity	The antibody detects endogenous levels of total LHCGR protein.
Immunogen Type	peptide
Immunogen Description	Synthetic peptide of human LHCGR
Target Name	LHCGR
Other Names	HHG; LHR; LCGR; LGR2; ULG5; LHRHR; LSH-R; LH/CGR; LH/CG-R
Accession No.	Swiss-Prot#: P22888NCBI Gene ID: 3973
Uniprot	P22888
GeneID	3973;
Concentration	0.4mg/ml
Formulation	Rabbit IgG in pH7.4 PBS, 0.05% NaN ₃ , 40% Glycerol.
Storage	Store at -20°C

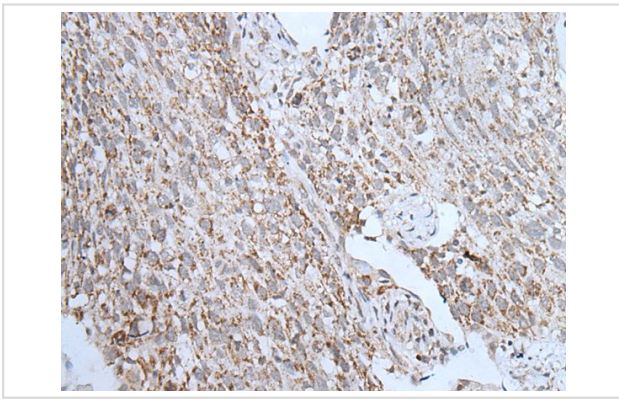
Application Details

Immunohistochemistry: 1: 20-100

Images



The image on the left is immunohistochemistry of paraffin-embedded Human esophagus cancer tissue using LHCGR Antibody at dilution 1/20, on the right is treated with synthetic peptide. (Original magnification: x200)



The image on the left is immunohistochemistry of paraffin-embedded Human lung cancer tissue using LHCGR Antibody at dilution 1/20, on the right is treated with synthetic peptide. (Original magnification: x200)

Background

This gene encodes the receptor for both luteinizing hormone and choriogonadotropin. This receptor belongs to the G-protein coupled receptor 1 family, and its activity is mediated by G proteins which activate adenylate cyclase. Mutations in this gene result in disorders of male secondary sexual character development, including familial male precocious puberty, also known as testotoxicosis, hypogonadotropic hypogonadism, Leydig cell adenoma with precocious puberty, and male pseudohermaphroditism with Leydig cell hypoplasia.

Note: This product is for in vitro research use only