

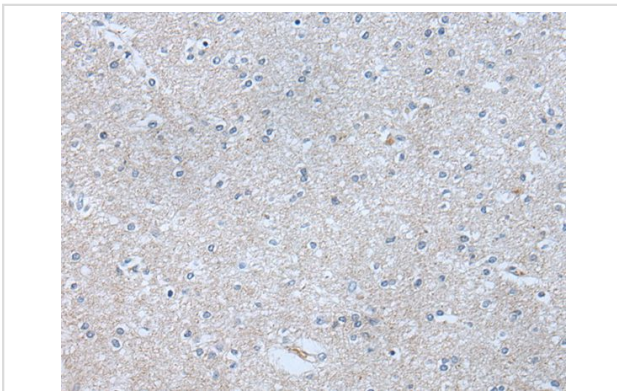
## Description

Product Name	ABR Antibody
Host Species	Rabbit
Clonality	Polyclonal
Purification	Antigen affinity purification
Applications	IHC
Species Reactivity	Hu
Specificity	The antibody detects endogenous levels of total ABR protein.
Immunogen Type	peptide
Immunogen Description	Synthetic peptide of human ABR
Target Name	ABR
Other Names	MDB
Accession No.	Swiss-Prot#: Q12979NCBI Gene ID: 29
Uniprot	Q12979
GeneID	29;
Concentration	0.5mg/ml
Formulation	Rabbit IgG in pH7.4 PBS, 0.05% NaN <sub>3</sub> , 40% Glycerol.
Storage	Store at -20°C

## Application Details

Immunohistochemistry: 1: 20-100

## Images



The image on the left is immunohistochemistry of paraffin-embedded Human brain tissue using ABR Antibody at dilution 1/20, on the right is treated with synthetic peptide. (Original magnification: x200)

## Background

This gene encodes a protein that is similar to the protein encoded by the breakpoint cluster region gene located on chromosome 22. The protein encoded by this gene contains a GTPase-activating protein domain, a domain found in members of the Rho family of GTP-binding proteins. Functional studies in mice determined that this protein plays a role in vestibular morphogenesis. Alternatively spliced transcript variants have been reported for this gene.?

---

Note: This product is for in vitro research use only