

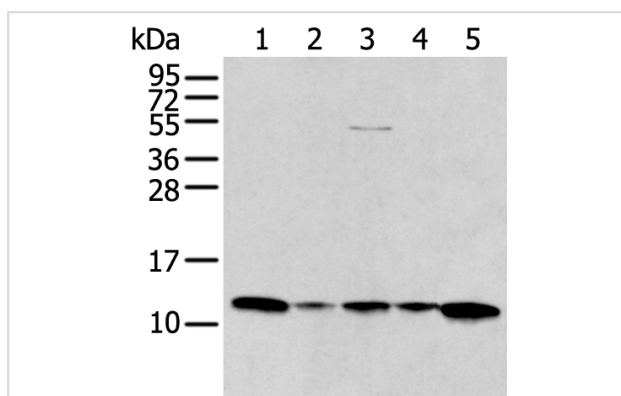
Description

Product Name	CCL1 Antibody
Host Species	Rabbit
Clonality	Polyclonal
Purification	Antigen affinity purification
Applications	WB
Species Reactivity	Hu
Specificity	The antibody detects endogenous levels of total CCL1 protein.
Immunogen Type	peptide
Immunogen Description	Synthetic peptide of human CCL1
Target Name	CCL1
Other Names	P500; SISE; TCA3; I-309; SCYA1
Accession No.	Swiss-Prot#: P22362NCBI Gene ID: 6346
Uniprot	P22362
GeneID	6346;
Calculated MW	11kd
Concentration	1.1mg/ml
Formulation	Rabbit IgG in pH7.4 PBS, 0.05% NaN ₃ , 40% Glycerol.
Storage	Store at -20°C

Application Details

Western blotting: 1:200-1000

Images



Gel: 12%SDS-PAGE

Lysate: 40 µg, Lane 1-5: A431B \times B \rightarrow JurkatB \times B \rightarrow Lovo and Hepg2 cellB \times B \rightarrow Human breast cancer tissue lysates,
 Primary antibody:CCL1 antibody at dilution 1/400 dilution,
 Secondary antibody: Goat anti rabbit IgG at 1/8000 dilution,
 Exposure time: 10 seconds

Background

This antimicrobial gene is one of several chemokine genes clustered on the q-arm of chromosome 17. Chemokines form a superfamily of secreted proteins involved in immunoregulatory and inflammatory processes. The superfamily is divided into four subfamilies based on the arrangement of the

N-terminal cysteine residues of the mature peptide. This chemokine, a member of the CC subfamily, is secreted by activated T cells and displays chemotactic activity for monocytes but not for neutrophils. It binds to the chemokine (C-C motif) receptor 8.

Note: This product is for in vitro research use only