

EPHA5 Antibody

Catalog No: #43770

Orders: order@signalwayantibody.comSupport: tech@signalwayantibody.com

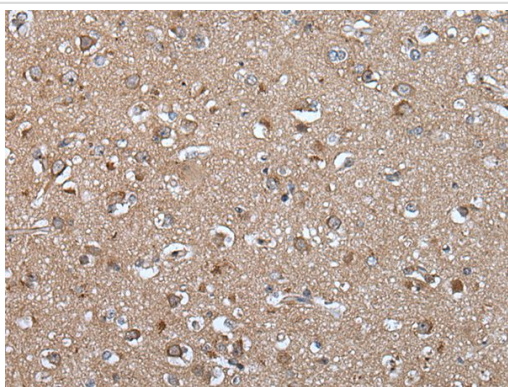
Description

Product Name	EPHA5 Antibody
Host Species	Rabbit
Clonality	Polyclonal
Purification	Antigen affinity purification
Applications	IHC
Species Reactivity	Hu Ms
Specificity	The antibody detects endogenous levels of total EPHA5 protein.
Immunogen Type	peptide
Immunogen Description	Synthetic peptide of human EPHA5
Target Name	EPHA5
Other Names	EK7; CEK7; EHK1; HEK7; EHK-1; TYRO4
Accession No.	Swiss-Prot#: P54756NCBI Gene ID: 2044
Uniprot	P54756
GeneID	2044;
Concentration	0.8mg/ml
Formulation	Rabbit IgG in pH7.4 PBS, 0.05% NaN ₃ , 40% Glycerol.
Storage	Store at -20°C

Application Details

Immunohistochemistry: 1: 20-100

Images



The image on the left is immunohistochemistry of paraffin-embedded Human brain tissue using EPHA5 Antibody at dilution 1/30, on the right is treated with synthetic peptide. (Original magnification: x200)

Background

This gene belongs to the ephrin receptor subfamily of the protein-tyrosine kinase family. EPH and EPH-related receptors have been implicated in mediating developmental events, particularly in the nervous system. Receptors in the EPH subfamily typically have a single kinase domain and an extracellular region containing a Cys-rich domain and 2 fibronectin type III repeats. The ephrin receptors are divided into 2 groups based on the similarity of their extracellular domain sequences and their affinities for binding ephrin-A and ephrin-B ligands. Alternatively spliced transcript variants

encoding different isoforms have been described.

Note: This product is for in vitro research use only