

## ZC3HAV1 Antibody

Catalog No: #43784

Orders: order@signalwayantibody.com

Support: tech@signalwayantibody.com

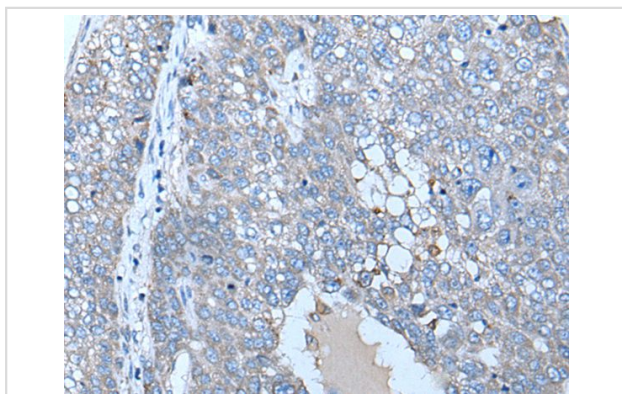
## Description

Product Name	ZC3HAV1 Antibody
Host Species	Rabbit
Clonality	Polyclonal
Purification	Antigen affinity purification
Applications	IHC
Species Reactivity	Hu
Specificity	The antibody detects endogenous levels of total ZC3HAV1 protein.
Immunogen Type	peptide
Immunogen Description	Synthetic peptide of human ZC3HAV1
Target Name	ZC3HAV1
Other Names	ZAP; ZC3H2; ARTD13; PARP13; FLB6421; ZC3HDC2
Accession No.	Swiss-Prot#: Q7Z2W4NCBI Gene ID: 56829
Uniprot	Q7Z2W4
GeneID	56829;
Concentration	0.8mg/ml
Formulation	Rabbit IgG in pH7.4 PBS, 0.05% NaN <sub>3</sub> , 40% Glycerol.
Storage	Store at -20°C

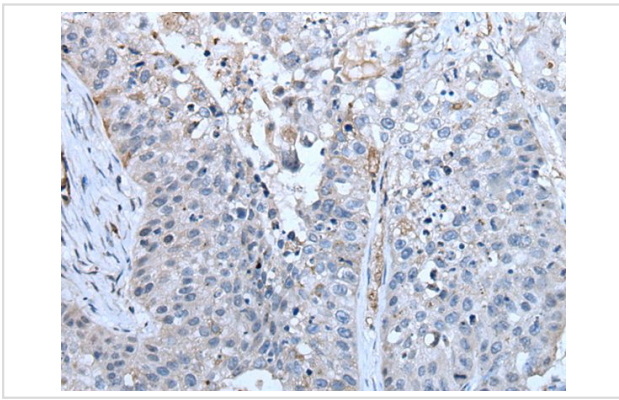
## Application Details

Immunohistochemistry: 1: 20-100

## Images



The image on the left is immunohistochemistry of paraffin-embedded Human liver cancer tissue using ZC3HAV1 Antibody at dilution 1/30, on the right is treated with synthetic peptide. (Original magnification: x200)



The image on the left is immunohistochemistry of paraffin-embedded Human lung cancer tissue using ZC3HAV1 Antibody at dilution 1/30, on the right is treated with synthetic peptide. (Original magnification: x200)

## Background

This gene encodes a CCCH-type zinc finger protein that is thought to prevent infection by retroviruses. Studies of the rat homolog indicate that the protein may primarily function to inhibit viral gene expression and induce an innate immunity to viral infection. Alternative splicing occurs at this locus and two variants, each encoding distinct isoforms, are described.?

Note: This product is for in vitro research use only