

ZDHHC5 Antibody

Catalog No: #43785

Orders: order@signalwayantibody.comSupport: tech@signalwayantibody.com

Description

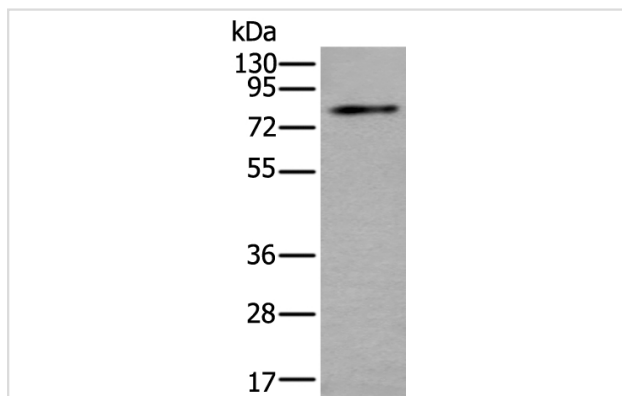
Product Name	ZDHHC5 Antibody
Host Species	Rabbit
Clonality	Polyclonal
Purification	Antigen affinity purification
Applications	IHC WB
Species Reactivity	Hu Ms Rt
Specificity	The antibody detects endogenous levels of total ZDHHC5 protein.
Immunogen Type	peptide
Immunogen Description	Synthetic peptide of human ZDHHC5
Target Name	ZDHHC5
Other Names	DHHC5; ZNF375
Accession No.	Swiss-Prot#: Q9C0B5NCBI Gene ID: 25921
Uniprot	Q9C0B5
GeneID	25921;
Calculated MW	78kd
Concentration	0.2mg/ml
Formulation	Rabbit IgG in pH7.4 PBS, 0.05% NaN ₃ , 40% Glycerol.
Storage	Store at -20°C

Application Details

Western blotting: 1:200-1000

Immunohistochemistry: 1: 20-100

Images



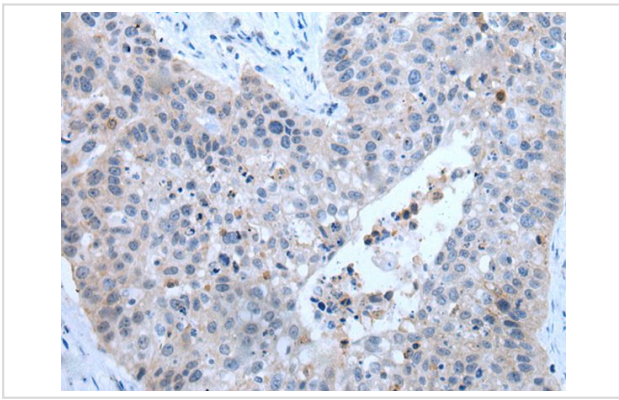
Gel: 8%SDS-PAGE

Lysate: 40 µg, Lane: Mouse kidney tissue lysate,

Primary antibody: ZDHHC5 antibody at dilution 1/200,

Secondary antibody: Goat anti rabbit IgG at 1/8000 dilution,

Exposure time: 1 minute



The image on the left is immunohistochemistry of paraffin-embedded Human lung cancer tissue using ZDHHC5 Antibody at dilution 1/20, on the right is treated with synthetic peptide. (Original magnification: x200)

Background

Palmitoyl acyltransferase for the G-protein coupled receptor SSTR5. Also palmitoylates FLOT2.

Note: This product is for in vitro research use only