

ZIC1 Antibody

Catalog No: #43786

Orders: order@signalwayantibody.comSupport: tech@signalwayantibody.com

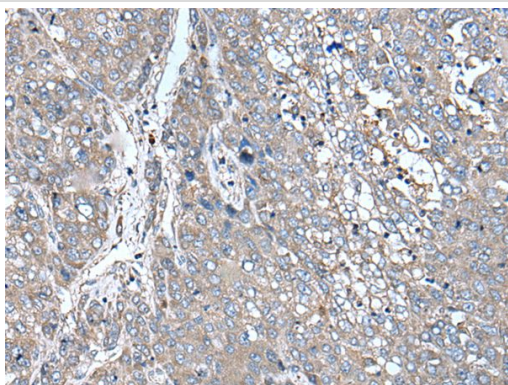
Description

Product Name	ZIC1 Antibody
Host Species	Rabbit
Clonality	Polyclonal
Purification	Antigen affinity purification
Applications	IHC
Species Reactivity	Hu Ms
Specificity	The antibody detects endogenous levels of total ZIC1 protein.
Immunogen Type	peptide
Immunogen Description	Synthetic peptide of human ZIC1
Target Name	ZIC1
Other Names	ZIC; ZNF201
Accession No.	Swiss-Prot#: Q15915NCBI Gene ID: 7545
Uniprot	Q15915
GeneID	7545;
Concentration	0.9mg/ml
Formulation	Rabbit IgG in pH7.4 PBS, 0.05% NaN ₃ , 40% Glycerol.
Storage	Store at -20°C

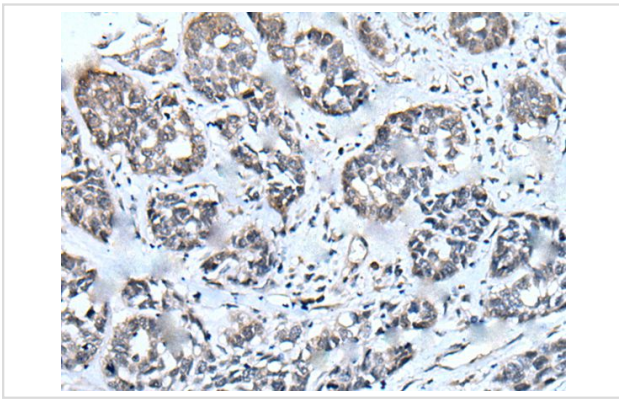
Application Details

Immunohistochemistry: 1: 20-100

Images



The image on the left is immunohistochemistry of paraffin-embedded Human liver cancer tissue using ZIC1 Antibody at dilution 1/35, on the right is treated with synthetic peptide. (Original magnification: x200)



The image on the left is immunohistochemistry of paraffin-embedded Human esophagus cancer tissue using ZIC1 Antibody at dilution 1/35, on the right is treated with synthetic peptide. (Original magnification: x200)

Background

This gene encodes a member of the ZIC family of C2H2-type zinc finger proteins. Members of this family are important during development. Aberrant expression of this gene is seen in medulloblastoma, a childhood brain tumor. This gene is closely linked to the gene encoding zinc finger protein of the cerebellum 4, a related family member on chromosome 3. This gene encodes a transcription factor that can bind and transactivate the apolipoprotein E gene.?

Note: This product is for in vitro research use only