

## ZNF703 Antibody

Catalog No: #43788

Orders: [order@signalwayantibody.com](mailto:order@signalwayantibody.com)Support: [tech@signalwayantibody.com](mailto:tech@signalwayantibody.com)

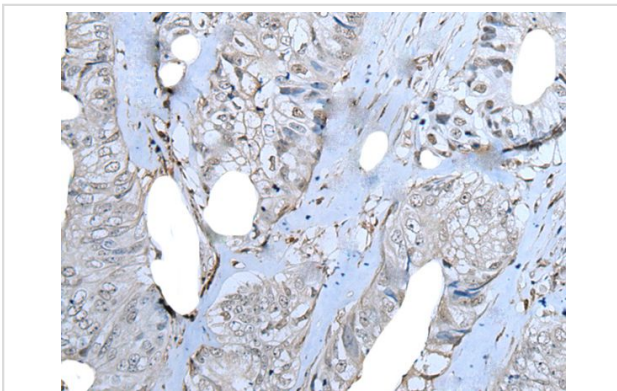
## Description

Product Name	ZNF703 Antibody
Host Species	Rabbit
Clonality	Polyclonal
Purification	Antigen affinity purification
Applications	IHC
Species Reactivity	Hu
Specificity	The antibody detects endogenous levels of total ZNF703 protein.
Immunogen Type	peptide
Immunogen Description	Synthetic peptide of human ZNF703
Target Name	ZNF703
Other Names	NLZ1; ZPO1; ZEPPO1; ZNF503L
Accession No.	Swiss-Prot#: Q9H7S9NCBI Gene ID: 80139
Uniprot	Q9H7S9
GeneID	80139;
Concentration	1mg/ml
Formulation	Rabbit IgG in pH7.4 PBS, 0.05% NaN <sub>3</sub> , 40% Glycerol.
Storage	Store at -20°C

## Application Details

Immunohistochemistry: 1: 30-150

## Images



The image on the left is immunohistochemistry of paraffin-embedded Human colorectal cancer tissue using ZNF703 Antibody at dilution 1/40, on the right is treated with synthetic peptide. (Original magnification: x200)

## Background

ZNF703 (zinc finger protein 703) is a 590 amino acid nuclear protein that contains one C2H2-type zinc finger and is thought to play a role in transcriptional regulation. Multiple isoforms of ZNF703 exist due to alternative splicing events. The gene encoding ZNF703 maps to human chromosome 8, which consists of nearly 146 million base pairs, houses more than 800 genes and is associated with a variety of diseases and malignancies. Schizophrenia, bipolar disorder, Trisomy 8, Pfeiffer syndrome, congenital hypothyroidism, Waardenburg syndrome and some leukemias

and lymphomas are thought to occur as a result of defects in specific genes that map to chromosome 8.

---

Note: This product is for in vitro research use only