

## CD34 Antibody

Catalog No: #43792

Orders: [order@signalwayantibody.com](mailto:order@signalwayantibody.com)Support: [tech@signalwayantibody.com](mailto:tech@signalwayantibody.com)

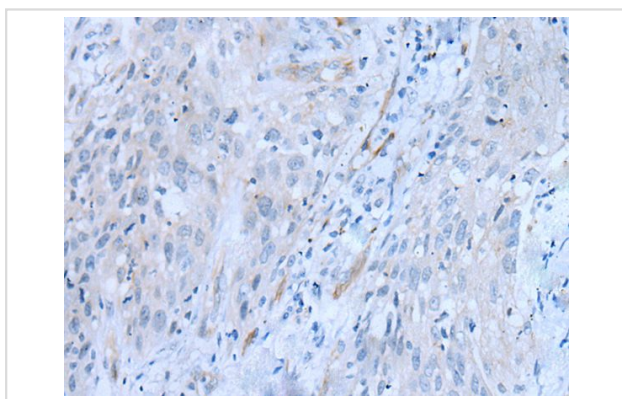
## Description

Product Name	CD34 Antibody
Host Species	Rabbit
Clonality	Polyclonal
Purification	Antigen affinity purification
Applications	IHC
Species Reactivity	Hu Ms
Specificity	The antibody detects endogenous levels of total CD34 protein.
Immunogen Type	peptide
Immunogen Description	Synthetic peptide of human CD34
Target Name	CD34
Accession No.	Swiss-Prot#: P28906NCBI Gene ID: 947
Uniprot	P28906
GeneID	947;
Concentration	0.4mg/ml
Formulation	Rabbit IgG in pH7.4 PBS, 0.05% NaN <sub>3</sub> , 40% Glycerol.
Storage	Store at -20°C

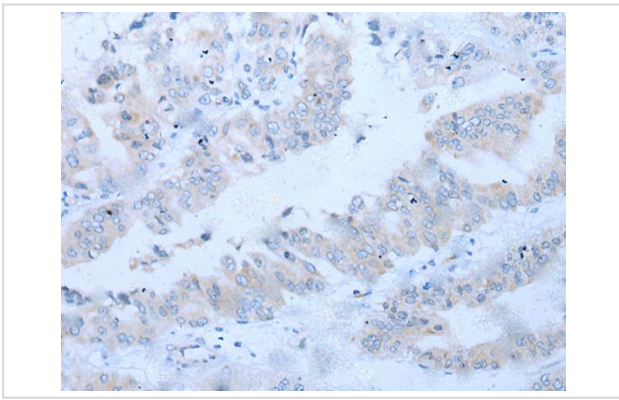
## Application Details

Immunohistochemistry: 1: 10-50

## Images



The image on the left is immunohistochemistry of paraffin-embedded Human lung cancer tissue using CD34 Antibody at dilution 1/20, on the right is treated with synthetic peptide. (Original magnification: x200)



The image on the left is immunohistochemistry of paraffin-embedded Human liver cancer tissue using CD34 Antibody at dilution 1/20, on the right is treated with synthetic peptide. (Original magnification: x200)

## Background

The protein encoded by this gene may play a role in the attachment of stem cells to the bone marrow extracellular matrix or to stromal cells. This single-pass membrane protein is highly glycosylated and phosphorylated by protein kinase C. Two transcript variants encoding different isoforms have been found for this gene.

Note: This product is for in vitro research use only