

WRN Antibody

Catalog No: #43808

Orders: order@signalwayantibody.comSupport: tech@signalwayantibody.com

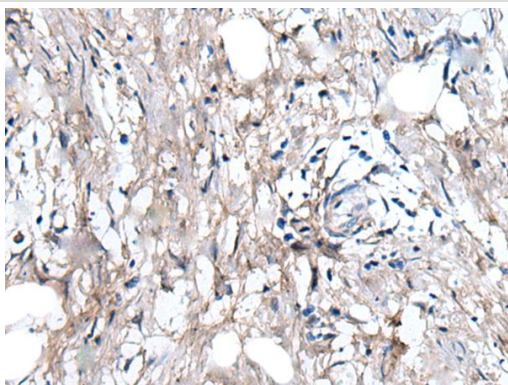
Description

Product Name	WRN Antibody
Host Species	Rabbit
Clonality	Polyclonal
Purification	Antigen affinity purification
Applications	IHC
Species Reactivity	Hu
Specificity	The antibody detects endogenous levels of total WRN protein.
Immunogen Type	peptide
Immunogen Description	Synthetic peptide of human WRN
Target Name	WRN
Other Names	RECQ3; RECQL2; RECQL3
Accession No.	Swiss-Prot#: Q14191NCBI Gene ID: 7486
Uniprot	Q14191
GeneID	7486;
Concentration	1.3mg/ml
Formulation	Rabbit IgG in pH7.4 PBS, 0.05% NaN ₃ , 40% Glycerol.
Storage	Store at -20°C

Application Details

Immunohistochemistry: 1: 30-150

Images



The image on the left is immunohistochemistry of paraffin-embedded Human gastric cancer tissue using WRN Antibody at dilution 1/55, on the right is treated with synthetic peptide. (Original magnification: x200)



The image on the left is immunohistochemistry of paraffin-embedded Human breast cancer tissue using WRN Antibody at dilution 1/55, on the right is treated with synthetic peptide. (Original magnification: x200)

Background

This gene encodes a member of the RecQ subfamily and the DEAH (Asp-Glu-Ala-His) subfamily of DNA and RNA helicases. DNA helicases are involved in many aspects of DNA metabolism, including transcription, replication, recombination, and repair. This protein contains a nuclear localization signal in the C-terminus and shows a predominant nucleolar localization. It possesses an intrinsic 3' to 5' DNA helicase activity, and is also a 3' to 5' exonuclease. Based on interactions between this protein and Ku70/80 heterodimer in DNA end processing, this protein may be involved in the repair of double strand DNA breaks. Defects in this gene are the cause of Werner syndrome, an autosomal recessive disorder characterized by premature aging.

Note: This product is for in vitro research use only