

## VSIG1 Antibody

Catalog No: #43826

Orders: [order@signalwayantibody.com](mailto:order@signalwayantibody.com)Support: [tech@signalwayantibody.com](mailto:tech@signalwayantibody.com)

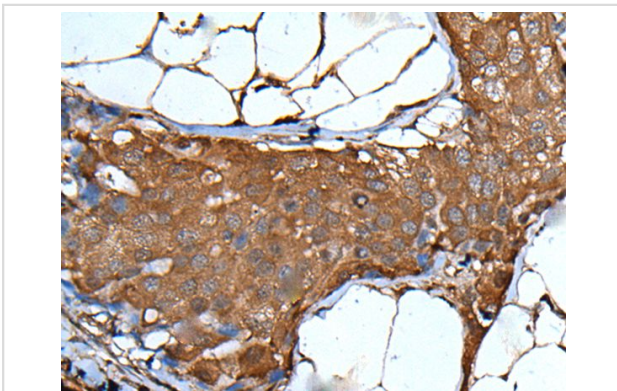
## Description

Product Name	VSIG1 Antibody
Host Species	Rabbit
Clonality	Polyclonal
Purification	Antigen affinity purification
Applications	IHC
Species Reactivity	Hu
Specificity	The antibody detects endogenous levels of total VSIG1 protein.
Immunogen Type	peptide
Immunogen Description	Synthetic peptide of human VSIG1
Target Name	VSIG1
Other Names	GPA34; dJ889N15.1; 1700062D20Rik
Accession No.	Swiss-Prot#: Q86XK7NCBI Gene ID: 340547
Uniprot	Q86XK7
GeneID	340547;
Concentration	0.8mg/ml
Formulation	Rabbit IgG in pH7.4 PBS, 0.05% NaN <sub>3</sub> , 40% Glycerol.
Storage	Store at -20°C

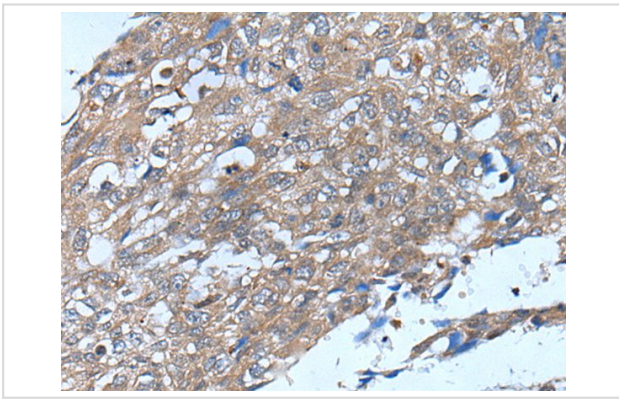
## Application Details

Immunohistochemistry: 1: 20-100

## Images



The image on the left is immunohistochemistry of paraffin-embedded Human breast cancer tissue using VSIG1 Antibody at dilution 1/35, on the right is treated with synthetic peptide. (Original magnification: x200)



The image on the left is immunohistochemistry of paraffin-embedded Human lung cancer tissue using VSI1 Antibody at dilution 1/35, on the right is treated with synthetic peptide. (Original magnification: x200)

## Background

This gene encodes a member of the junctional adhesion molecule (JAM) family. The encoded protein contains multiple glycosylation sites at the N-terminal region, and multiple phosphorylation sites and glutamic acid/proline (EP) repeats at the C-terminal region. The gene is expressed in normal stomach and testis, as well as in gastric, esophageal and ovarian cancers. Alternatively spliced transcript variants encoding different isoforms have been found for this gene.

Note: This product is for in vitro research use only