

UBA52 Antibody

Catalog No: #43827



Orders: order@signalwayantibody.com
Support: tech@signalwayantibody.com

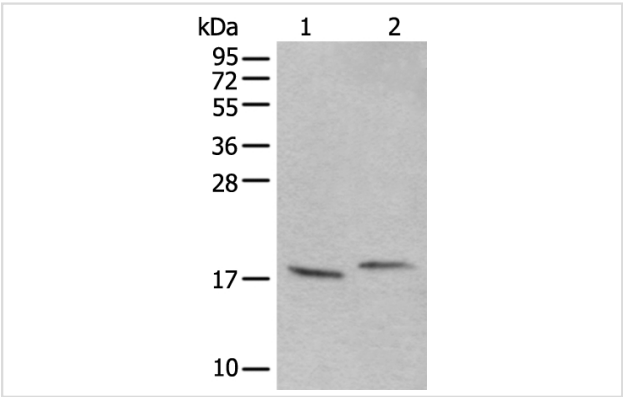
Description

| | |
|-----------------------|--|
| Product Name | UBA52 Antibody |
| Host Species | Rabbit |
| Clonality | Polyclonal |
| Purification | Antigen affinity purification |
| Applications | IHC WB |
| Species Reactivity | Hu Ms Rt |
| Specificity | The antibody detects endogenous levels of total UBA52 protein. |
| Immunogen Type | peptide |
| Immunogen Description | Synthetic peptide of human UBA52 |
| Target Name | UBA52 |
| Other Names | L40; CEP52; RPL40; HUBCEP52 |
| Accession No. | Swiss-Prot#: P62987NCBI Gene ID: 7311 |
| Uniprot | P62987 |
| GeneID | 7311; |
| Calculated MW | 15kd |
| Concentration | 1mg/ml |
| Formulation | Rabbit IgG in pH7.4 PBS, 0.05% NaN3, 40% Glycerol. |
| Storage | Store at -20°C |

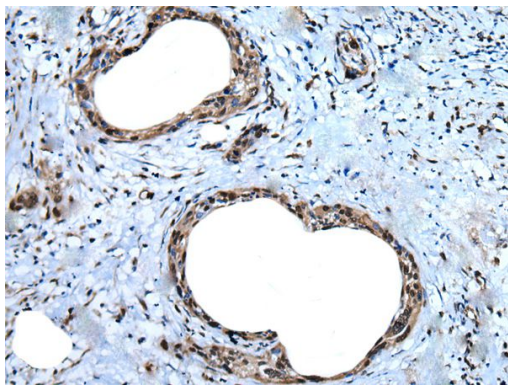
Application Details

| |
|---------------------------------|
| Western blotting: 1:200-1000 |
| Immunohistochemistry: 1: 20-100 |

Images



Gel: 12%SDS-PAGE
Lysate: 40 µg, Lane 1-2: 293T and Raji cell lysates,
Primary antibody:UBA52 antibody at dilution 1/400,
Secondary antibody: Goat anti rabbit IgG at 1/8000 dilution,
Exposure time: 10 minutes



The image on the left is immunohistochemistry of paraffin-embedded Human cervical cancer tissue using UBA52 Antibody at dilution 1/40, on the right is treated with synthetic peptide. (Original magnification: x200)

Background

Ubiquitin is a highly conserved nuclear and cytoplasmic protein that has a major role in targeting cellular proteins for degradation by the 26S proteasome. It is also involved in the maintenance of chromatin structure, the regulation of gene expression, and the stress response. Ubiquitin is synthesized as a precursor protein consisting of either polyubiquitin chains or a single ubiquitin moiety fused to an unrelated protein. This gene encodes a fusion protein consisting of ubiquitin at the N terminus and ribosomal protein L40 at the C terminus, a C-terminal extension protein (CEP). Multiple processed pseudogenes derived from this gene are present in the genome.

Note: This product is for in vitro research use only