

UBE4B Antibody

Catalog No: #43828

Orders: order@signalwayantibody.comSupport: tech@signalwayantibody.com

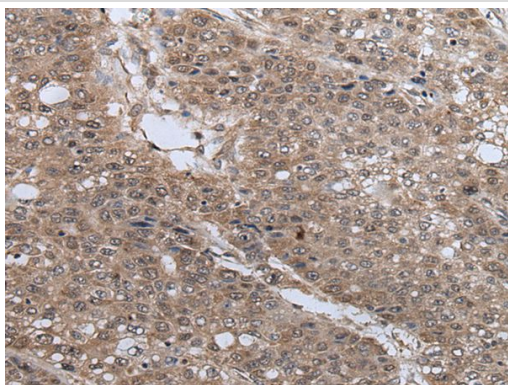
Description

Product Name	UBE4B Antibody
Host Species	Rabbit
Clonality	Polyclonal
Purification	Antigen affinity purification
Applications	IHC
Species Reactivity	Hu Ms
Specificity	The antibody detects endogenous levels of total UBE4B protein.
Immunogen Type	peptide
Immunogen Description	Synthetic peptide of human UBE4B
Target Name	UBE4B
Other Names	E4; UFD2; HDNB1; UBOX3; UFD2A
Accession No.	Swiss-Prot#: O95155NCBI Gene ID: 10277
Uniprot	O95155
GeneID	10277;
Concentration	1mg/ml
Formulation	Rabbit IgG in pH7.4 PBS, 0.05% NaN ₃ , 40% Glycerol.
Storage	Store at -20°C

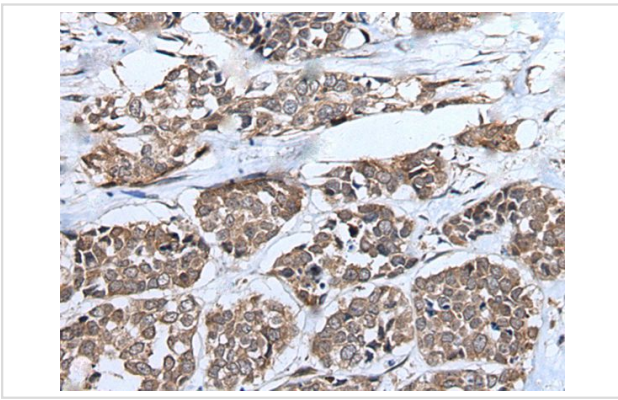
Application Details

Immunohistochemistry: 1: 30-150

Images



The image on the left is immunohistochemistry of paraffin-embedded Human liver cancer tissue using UBE4B Antibody at dilution 1/40, on the right is treated with synthetic peptide. (Original magnification: x200)



The image on the left is immunohistochemistry of paraffin-embedded Human esophagus cancer tissue using UBE4B Antibody at dilution 1/40, on the right is treated with synthetic peptide. (Original magnification: x200)

Background

The modification of proteins with ubiquitin is an important cellular mechanism for targeting abnormal or short-lived proteins for degradation. Ubiquitination involves at least three classes of enzymes: ubiquitin-activating enzymes, or E1s, ubiquitin-conjugating enzymes, or E2s, and ubiquitin-protein ligases, or E3s. This gene encodes an additional conjugation factor, E4, which is involved in multiubiquitin chain assembly. This gene is also the strongest candidate in the neuroblastoma tumor suppressor genes. Alternatively spliced transcript variants encoding distinct isoforms have been found for this gene.

Note: This product is for in vitro research use only